

## HEATERS

### Kerosene

- 70,000-600,000 BTU

### Forced Air

- Propane or NG, to 400,000 BTU

### Convection/Pot Heaters

- No electricity required

### Ductable Heaters

- Direct & Indirect Fired

### Industrial Torches



## BOOTS

### Slush Boots

- No Left or Right for no hassle
- Natural Latex Rubber
- Drag-free interior and 800% Elongation for Easy on/off



## REPLACEMENT ENGINES

Honda, Robin/Subaru, Briggs & Stratton & others

**Robin**  
SUBARU

BRIGGS & STRATTON

**KOHLER**  
ENGINES

**HONDA**  
ENGINES

**HATZ**  
DIESEL



- Vertical and Horizontal Shaft
- meet current CARB and EPA standards

## MARKING SUPPLIES



### Flagging Tape



- 2-mil or 4-mil
- Non-adhesive vinyl
- Available in 6 vibrant colors

### Paint and Applicators

- Fast-Drying
- Highly Pigmented
- For warehouses or Parking lots



### Barricade Tape

- 2-mil reusable polyethylene vinyl
- Continuous bilingual messages

## RAKES • LUTES • BROOMS • BRUSHES



- Digging Bars
- Hand Tampers



GET THE STRIPE  
**SEYMOUR**  
QUALITY TOOLS SINCE 1872

- Lute Rakes,
- Gauge Rakes,
- Floor Squeegees,
- Brooms, Brushes
- Shovels, Hoes and Scrapers



### Sweepers

- Ride-on, Walk-behind, Tow-behind
- Adjustable height and angle

Call Able Tool & Equipment for service on your Compactors, Trowels, Generators, Saws & more.

[www.abletool.net](http://www.abletool.net)

**860.289.2020**  
**413-363-0780**

**ABLE**  
TOOL and EQUIPMENT

**Tool & Equipment LLC**

South Windsor, CT / Springfield, MA

410 Burnham Street • So. Windsor, CT 06074 • 860-289-2020  
120 Interstate Drive • W. Springfield, MA 01089 • 413-363-0780

## SERVICE & PARTS

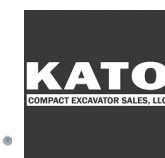
Reasonable Turnaround  
Quality Mechanics  
Competitive Parts Prices  
Pickup & Delivery Service

## EARTHMOVING EQUIPMENT



### Equipment

- Skidsteer
- Compact Loaders
- Wheel-Dumpers
- Track Loaders
- Mini-Excavators



CANYCOM



Battery Powered

**miniconveyor**

The Portable,  
Powerful  
**CONVEYOR**  
**SYSTEM**



## ACCESSORIES

Different sizes of **Hoppers**  
Hand loading, Bobcat or Mini-Excavator,  
Skid Steer and Double Grizzly

**Variable heights stands** for quick  
set-up and adjustment. Turn corners and  
convey material up to a 40 degree angle

**Side Rails** allow for moving  
oversized material and  
eliminates spillage.



**Clamp kits** lock units  
together to create 40' spans



**Daisy Chain**  
3 units from a  
Single 15  
Amp Circuit

Add **wheels** and move  
units effortlessly



**WACKER NEUSON**  
*all it takes!*



\* Financing Available for New and Used Equipment.

Call Able Tool & Equipment for service on your Compactors, Trowels, Generators, Saws & more.

[www.abletool.net](http://www.abletool.net)

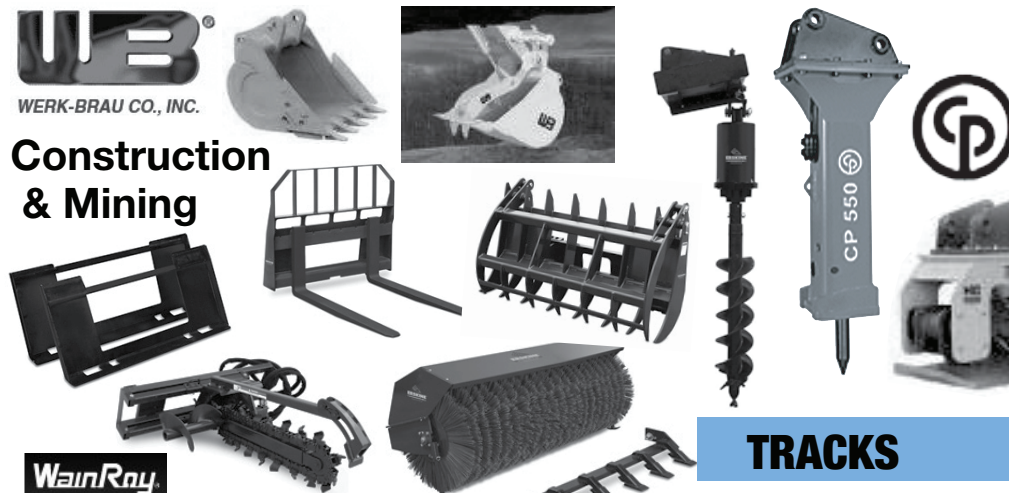
**860.289.2020**  
**413-363-0780**



## LOADER/EXCAVATOR ATTACHMENTS



**Construction  
& Mining**



**Rig Mounted Hydraulic  
Compactor Attachments  
and Breakers**

- Light
- Medium
- Heavy

**Atlas Copco**



## TRACKS

**WainRay**

**SWEEPSTER  
BRADCO**

## LIFTING PRODUCTS



## Rubber Tracks

- Mini-excavator
- Track Loader
- Agricultural (Ag)
- Compact track loader
- Over-the-Tire (OTT) for skid steer loader

**camoplast  
solideal**



## TROWELS

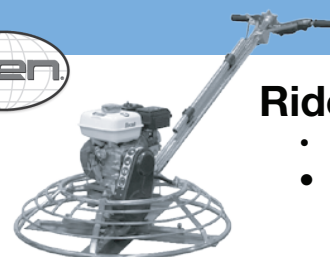
**Bartell**

**WACKER  
CONSTRUCTION  
EQUIPMENT**



## Walk-Behind Trowels

- 24" Edging Trowels
- 36" & 48" Walk-Behinds



## Ride-On Trowels

- 36" & 48" Models
- Manual or Electronic Steer



**Clean Air Units  
Available with  
Scrubbers or  
Propane**

## SCREEDS



**Truss Screed**

- Honda Engine
- Pneumatic

**allen  
ENGINEERING  
CORPORATION**

## Wet/Vibratory Screed

- 4' - 16' Blade Length
- Honda 4-cycle



## VIBRATORS

### Internal Vibrators

- 1hp, 2hp, 3hp
- 1" - 2 3/4" Heads
- 3' - 30' Shafts



### High Cycle Vibrators

- 3 phase/motor in-head 115v

### External Vibrators



**NORTHROCK  
NORTHROCK INDUSTRIES, INC.**

Call Able Tool & Equipment for service on your  
Compactors, Trowels, Generators, Saws & more.

**www.abletool.net**

**860.289.2020  
413-363-0780**

## SAFETY CANS

### Fuel Cans

- Galvanized Steel or Polyethylene
- Environmentally friendly lead-free Technology
- 1 quart - 5 gallon capacity



**JUSTRITE®**



## SPRAYERS

**CHAPIN**  
The Way to Spray  
Since 1884

### Industrial Concrete Sprayers

- Resistant to the most Extreme Chemicals
- Wide mouth for easy Filling and Cleaning
- Hose reinforcement resists chemical attack, crimping, cracking and leaking



## GENERATORS

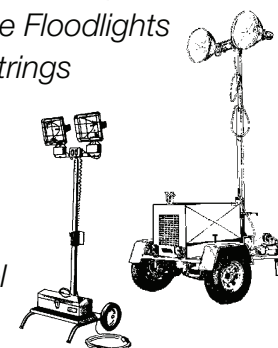


### Portable & Towable Units



### Accessories

- Distribution Boxes
- Cords and Adapters
- Portable Floodlights
- Light Strings



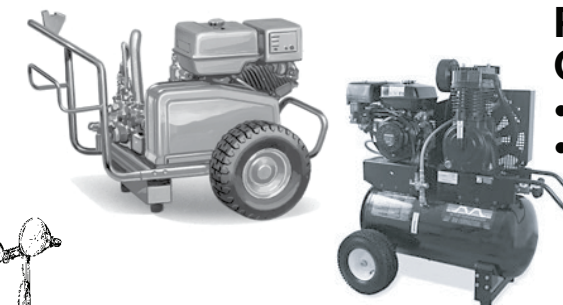
### Light Towers, 4000w

- 30gal cap.
- 12.2hp Lombardini Diesel
- 125v Duplex

## Mi-T-M PRODUCTS

### Cold & Hot Pressure Washers

- Electric, Gasoline or Diesel
- Direct or Belt Driven

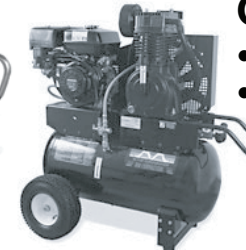


### Mi-T-M®



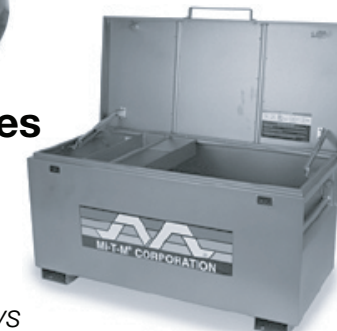
### Portable Air Compressors

- Electric or Gasoline
- 5, 8, 20, or 30 Gallons



### Jobsite Tool Boxes

- Heavy-duty solid steel construction
- Predrilled skids for easy caster installation
- Optional removable tool trays



## TRAFFIC SUPPLIES



**SOLARTECH®**

- Vehicle and Trailer mounted Solar Technology boards
- Cones, Traffic Barrels, and Carriers available



Call Able Tool & Equipment for service on your  
Compactors, Trowels, Generators, Saws & more.

**www.abletool.net**

**860.289.2020  
413-363-0780**



## MIXERS



**Concrete Mixers**  
Wheelbarrow Style

- Gas or Electric
- Towable
- 9 & 12 cu. ft.



### Mortar Mixers

**Vertical Shaft Units**

- 1/2 thru 27 cu. ft.

### Horizontal Shaft (traditional) Units

- 4 thru 16 cu. ft.
- 8 cu. ft., 2-1/2 to 3 bag capacity
- Extendable axle (34" to 46").
- High speed B78 x 13 (25" dia.) turnpike tires



## PUMPS



**Submersibles**  
**Dewatering**  
**Diaphragm**  
**Trash Pumps**



- Self-Priming, Priming Assisted, Packaged Pumping Systems, Submersible, Standard Centrifugal, Diaphragm, and Rotary Gear Pumps

## ELECTRIC DUMPERS



## MATERIAL HANDLING



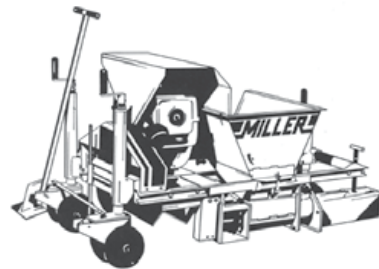
**Concrete Buggies**

**Miller**

**Gar-Bro**



**Curb Machines**



## AIR HOSE & FITTINGS



**Air & Water Hose**



**Strainers**



**Fittings & Hardware**

Call Able Tool & Equipment for service on your Compactors, Trowels, Generators, Saws & more.

[www.abletool.net](http://www.abletool.net)

**860.289.2020**  
**413-363-0780**

## COMPACTION



### Rammers

- Electric
- Oil Injected
- 2 Cycle / 4 Cycle
- Diesel



### Plate Compactors

#### Single Direction Plates

- Wheel Kits & Water Kits Optional

#### Forward/Reverse Compactors

- Gasoline & Diesel



**Clean Air Units**  
Available with  
Scrubbers or Propane

## ROLLERS



### Walk Behind

- Single & Double Drum

### Remote Control

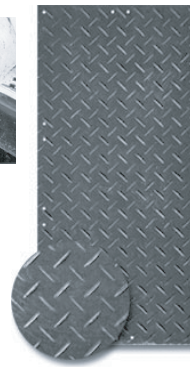
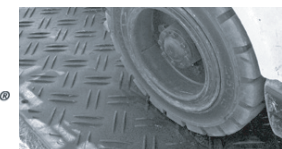
- 33" or 24" Drums

### Ride-On

- Single & Double Drum



## GROUND PROTECTION MATS



### Traction & Access Mats

- Super-durable design allows for trucks & earth-moving equipment.
- Can be connected on all sides to form large work pads & extended roadways.

Call Able Tool & Equipment for service on your Compactors, Trowels, Generators, Saws & more.

[www.abletool.net](http://www.abletool.net)

## COMPRESSORS

**Optional**  
**Skid Mounting**  
or 'Harsh Environment Package'



### Portable

- 125 - 1600 cfm
- standard, high pressure, and utility models



### Utility

- Designed for mounting on utility-type trucks
- Easy to use and service.

## E-Z DRILL



**E-Z DRILL**

EZ Drill offers a wide variety of configurations for most concrete drilling & doweling applications. Machines can be custom designed for specific applications.



- Slab Rider Models
- On Grade Models
- Equipment Mounted Models



## ANTI-FREEZE SYSTEMS



Preventing Air Line Freeze-ups since 1982

### Dispensers

- Compact Dispensers
- Tanks
- Tri Fluid Injector
- Frosto® Vaporizer

### De-icants

- Tannergas®
- No Tox 2®
- Froston®



**860.289.2020**  
**413-363-0780**



## CUTTING EQUIPMENT

**Walk Behind Saws**  
• Gas, Diesel, Electric Pneumatic

### Masonry Saws

- Gas or Electric
- 14-20"

### Core-Rigs

- Hand-Held & Stationary



### Gas Cutoff Saws

### Electric Saws

### Air Powered Demo Saws

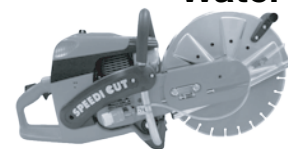
### Hydraulic Saws

### Ring-Saw & Power Units



### Accessories

Water-kits, Trolley Carts,  
Etc.



Clean Air Units Available with Scrubbers or Propane

## AIR TOOLS

**Chipping Hammers**  
D-Handle or Pistol Grip

**Rivet Busters**  
6" - 8" - 11" Stroke

### Pneumatic Scabbler



### Rock Drills

### Paving Breakers

35lb - 60lb - 90lb



### Backfill Tampers

## HYDRAULIC TOOLS

**Hydraulic**  
• 814PRO or 853PRO  
**Gasoline**  
• 613GC or 633GC

**Replacement Bars & Chains**



**Hydrasaws**  
**Core Drills**  
**Tampers**  
**Pumps**  
**Pullers**  
**Breakers/Drills**

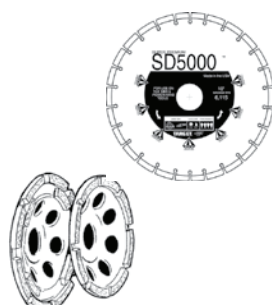
## BLADES

**Walk Behind Blades**  
12" - 36"

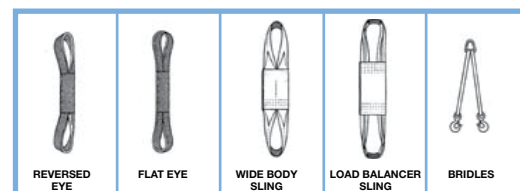
**High Speed Blades**  
12" - 16"

**Cup Wheels**

**Core Bits**



## WEB SLINGS, WIRE ROPE & CHAINS



**Lifting Chains** Bridles & Slings

Call Able Tool & Equipment for service on your  
Compactors, Trowels, Generators, Saws & more.

[www.abletool.net](http://www.abletool.net)

**860.289.2020**  
**413-363-0780**

## DEMOLITION

**Rotary Hammer**  
EHB11 Spline, SDS  
Max or Hex, 24lbs, Drill to  
2", Brushless, Core to 5"



### Electric Breaker

EH27, 60lb,  
1-1/8" x 6" Shank  
115V. 60Hz, 15amp,  
57lbs

**Gasoline Breaker**  
BH231-1/8" x 6" Shank, 4hp,  
2 cycle engine, 50lbs

## ABRASIVE PRODUCTS

### Concrete Ductile Asphalt Metal

#### Cut Off Saw Blades

- 12" x 1/8" x 1"
- 14" x 1/8" x 1"
- 12" x 1/8" x 20mm
- 14" x 1/8" x 20mm

#### Cup Wheels for Grinders

- CW0601 6" x 2" x 5/8-11 concrete
- CW0603 6" x 2" x 5/8-11 metal

#### Raised Hub Wheels for Grinders

- 4-1/2" x 1/4" x 7/8" metal
- 1/2" x 1/4" x 7/8" concrete
- 7" x 1/4" x 5/8-11 concrete
- 7" x 1/4" x 5/8-11 metal

## REBAR EQUIPMENT

### Cutters

- #5 - #10 Grade 60 cutting ability

### Benders

- Dial-type angle selector can accurately  
bend between 0-180 degrees



Call Able Tool & Equipment for service on your  
Compactors, Trowels, Generators, Saws & more.

[www.abletool.net](http://www.abletool.net)

## ACCESSORIES

### Breakers

Asphalt Cutter

Clay Spades

Moil Points

1" Chisels

3" Chisels

### Chipping Hammers

Bushing Tools

### Hydraulic Breaker Tools

**Brunner & Lay**



### Rivet Busters & Accessories

Moil Point, Chisels

### Rock Drills

Carbide  
Bits

Drill Steel

Speed Drills

## CONCRETE FINISHING TOOLS

### Finish Blades

### Float Blades

Clip On

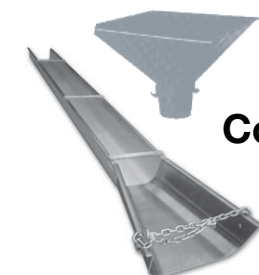
### Combination Blades

### Poly Blades

### Pans

### Bull Floats & Other Hand Tools

### Magnesium Screeds

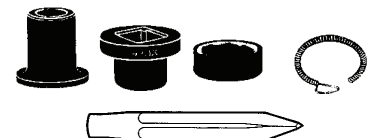
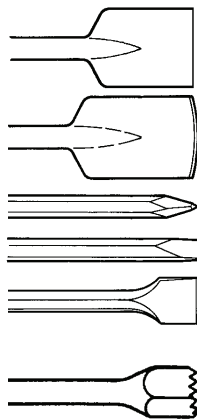


**Concrete Bucket**  
**Concrete Hopper**

**Gar-Bro**

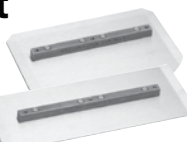
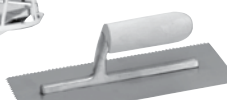
**Collars & Accessories**

**Brunner & Lay**



**WAGMAN**

**Elephant  
Trunks**



**860.289.2020**  
**413-363-0780**