

Beautifully Crafted and Ruggedly Designed Firepit Kits

The Firepit Source



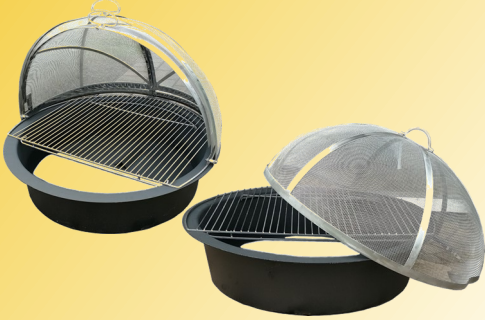
The Firepit Source, LLC

www.thefirepitsource.com

Firepit Kits

Everything You Need For Your Block Firepit

Round Firepit Kits



- ◆ Includes insert, stainless steel grill grate, stainless steel spark screen and stainless steel poker with wood handle
- ◆ Insert available with or without a bottom
- ◆ Available in two sizes that fit block openings from 29 - 32 inch diameter
- ◆ Spark screen available in hinged or one-piece construction

Square Firepit Kits



- ◆ Includes bottomless insert, stainless steel grill grate, one-piece stainless steel spark screen and stainless steel poker with wood handle
- ◆ Available in two sizes that fit 24 inch and 28 inch block openings

Lo-Smoke Firepit Kits



- ◆ Includes Lo-Smoke insert, stainless steel spark screen, lid and stainless steel poker with wood handle
- ◆ Spark screen available in hinged or one-piece construction
- ◆ Accommodates block openings of 28 inch to 33 inch inside diameter

Fire Bowl Kits



- ◆ Basic kit includes copper colored bowl with stainless steel grill grate, stainless steel wood grate, stainless steel poker and either one-piece or hinged stainless steel spark screen
- ◆ Fits pit openings from 29" to 32" diameter
- ◆ Deeper bowl design accepts more wood than comparable bowls
- ◆ Formed seats keep the grates and screen in place
- ◆ Five drain holes also serve to feed the fire from below

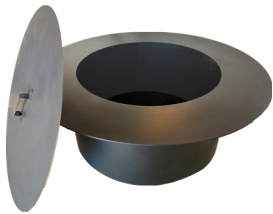
Firepit Components

Standard Inserts: Where Every Great Fire Starts



- ♦ High-quality carbon steel with high temp black paint
- ♦ Tapered body allows inserts to be nested together, saving on freight cost and inventory space
- ♦ Wide 2 inch flange
- ♦ Round inserts:
 - ♦ Available with or without a bottom
 - ♦ Inserts with a bottom make for easy ash removal. Eight drain holes also serve to feed the fire from below
 - ♦ Available in two sizes: 29 inch fits block openings from 29 - 30 inch diameter. 31 inch fits block openings from 31 - 32 inch diameter
- ♦ Square inserts:
 - ♦ Available without a bottom
 - ♦ Available in two sizes that fit 24 inch and 28 inch block openings

Lo-Smoke Inserts: For Great Fires with Little Smoke



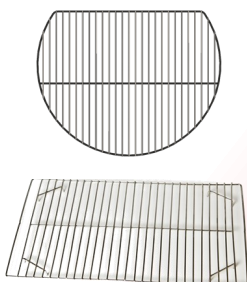
- ♦ Offered in black painted steel or stainless steel
- ♦ Accommodates blocks having 28 inch to 33 inch inside diameter
- ♦ Inside diameter is 24 inch
- ♦ Drain holes prevent standing water and promote airflow

Round Spark Screens: Reduce Flying Embers



- ♦ Stainless steel construction ensures lasting performance and beauty
- ♦ Round screens:
 - ♦ Available in choice of hinged or one-piece construction
 - ♦ Three sizes available that work with the 29 and 31 inch standard round inserts, Lo-Smoke inserts and bowl kits
- ♦ Square screens:
 - ♦ Available in one-piece construction
 - ♦ Two sizes available that work with the 24 and 28 inch standard square inserts

Grill Grates: Essential for Grilling and Cooking



- ♦ Stainless steel construction ensures lasting performance
- ♦ Available in round or rectangular shape
- ♦ Lay-flat design eliminates need for unaesthetic grill brackets
- ♦ Shape allows access to logs without having to touch the grate

Firepit Accessories

Log Grates: Elevate Logs for Proper Airflow



- ◆ Constructed with solid, formed and welded bar stock
- ◆ 26.5 inch diameter spider shape holds ample amounts of wood
- ◆ Fits 29 inch round, 31 inch round and 28 inch square inserts

Covers: Protect Your Investment From the Elements



- ◆ Constructed of heavy duty vinyl cover with bottom drawstring
- ◆ Round covers fit block pits up to 50 inch diameter
- ◆ Square covers fit block pits up to 51 inch square

Pokers: Tend to Your Fire and Lift Hot Spark Screens



- ◆ Stainless Steel With Wood Handle Or Black Carbon Steel



Ellen Cronan

802-349-2059

ellenc@thefirepitsource.com

www.thefirepitsource.com