

# THE NICOLock WALL COLLECTION



Style | Color | Choice    It's easy with Nicolock

**NICOLock**<sup>®</sup>  
paving stones & retaining walls  
 paver-shield<sup>™</sup>

# NICOLOCK WALL SYSTEMS

Nicolock Walls are available in a variety of styles and include features designed for multiple applications. To help you select the best wall for your installation, please review the chart below. Additional information is included on each product page.

WALL STYLE	SYSTEM		CORNERS	WALL HEIGHTS*		ALIGNMENT	SETBACK	CORE	FEATURES	OUTDOOR LIVING KITS
				GRAVITY (+/-)	REINFORCED (+/-)					
<b>LANDSCAPE WALLS</b> – Ideal for retaining, free-standing seat walls and many other outdoor living features										
Mini Colonial	4-Piece	N/A	Yes/Split	1.5'	N/A	Concrete Adhesive	Vertical	Solid	Double Sided	N/A
5" Colonial	4-Piece	Yes	Yes/Split	2.5'	6'	Tongue & Groove	Vertical or 1.5"	Solid	Double Sided	N/A
6" Colonial	4-Piece	N/A	Yes/Split	1.5'	N/A	Concrete Adhesive	Vertical	Solid	Double Sided	N/A
Verona	1-Piece	N/A	Yes	1.5'	N/A	Concrete Adhesive	Vertical	Solid	Double Sided	Yes
Stonegate®	3-Piece	Yes	Yes	2.5'	6'	Pin	Vertical or 1"	Solid	Double Sided	Yes
Claremont	2-Piece	N/A	Yes	1.5'	N/A	Concrete Adhesive	Vertical	Solid	Double Sided	N/A
Belvedere	6-Piece	Yes	Yes	2.0'	6'	Concrete Adhesive	1/2"	Solid	Double Sided	Yes
Kodah	4-Piece	Yes	Yes	2.5'	6'	Concrete Adhesive	3/4"	Solid	Double Sided	Yes
<b>RETAINING WALLS</b> – Walls built for earth retention suitable for residential or commercial installations										
Firma	1-Piece	Yes	Yes	3.0'	12'	Tongue & Groove	3/4"	Solid	Single Sided	N/A
Everloc™	1-Piece	Yes	Yes	3.0'	15'	Tongue & Groove	1"	Hollow	Single Sided	N/A
Alta	1-Piece	Yes	Yes	3.0'	12'	Rear Lip	1"	Hollow	Single Sided	N/A
Alta Pro	1-Piece	Yes	Yes	3.0'	40'	Rear Lip	1"	Hollow	Single Sided	N/A
Trinity®	1-Piece	Yes	Yes	3.0'	40'	Lug/Built In	1"	Hollow	Single Sided	N/A
Compac III	1-Piece	Yes	Yes	3.0'	40'	Pin	Near Vertical or 1"	Hollow	Single Sided	N/A
Outcropping	12-Piece	Yes	Yes	6'	15'	Shear Heel Lugs	14 Degrees	Solid	Single Sided	N/A
<b>GARDEN WALLS</b> – Perfect for tree rings, edgings, garden borders and low retaining wall installations										
Sierra	1-Piece	N/A	N/A	1.5'	N/A	Rear Lip	1"	Solid	Single Sided	N/A
Serafina	1-Piece	N/A	N/A	1.5'	N/A	Concrete Adhesive	Vertical	Solid	Double Sided	Yes
Mountain Block	2-Piece	N/A	N/A	1.5'	N/A	Concrete Adhesive	Vertical or 1"	Solid	Single Sided	Yes

\*Wall heights shown are intended as a guide and not for construction purposes. Consult a qualified engineer for design assistance. Note: Gravity walls rely on unit weight and unit set-back to retain soils. Reinforced walls rely on unit weight, unit set-back and geogrid to retain and stabilize soils.


# Think color. Think Nicolock.

One look and you'll appreciate Nicolock's exceptional color palette – rich, deep and brilliant. And when it comes to choosing the perfect wall to suit any style, look no further than The Nicolock Wall Collection. We make it easy to choose the perfect wall for any residential or commercial installation. Look for Nicolock, where beauty, durability and functionality meet.



Mountain Block | Color: York Brown

- **Landscape Walls** ..... 4
  - Mini/5”/6” Colonial Wall ..... 6
  - Verona ..... 8
  - Stonegate® Contemporary ..... 9
  - Claremont ..... 10
  - Belvedere ..... 11
  - Kodah ..... 12
  
- **Retaining Walls** ..... 13
  - Firma ..... 14
  - Everloc™ ..... 15
  - Alta ..... 16
  - Alta Pro ..... 17
  - Trinity ..... 18
  - Keystone® Compac III Straight Split ..... 19
  - Outcropping ..... 20
  
- **Garden Walls** ..... 21
  - Sierra ..... 22
  - Serafina ..... 23
  - Mountain Block ..... 24
  
- **Piers/Coping/Caps/Steps** ..... 25
  - Piers & Caps ..... 26
  - Wall Coping & Caps ..... 29
  
- **Retaining Wall Installation Guide** ..... 32



**Engineered  
Retaining Wall  
System**

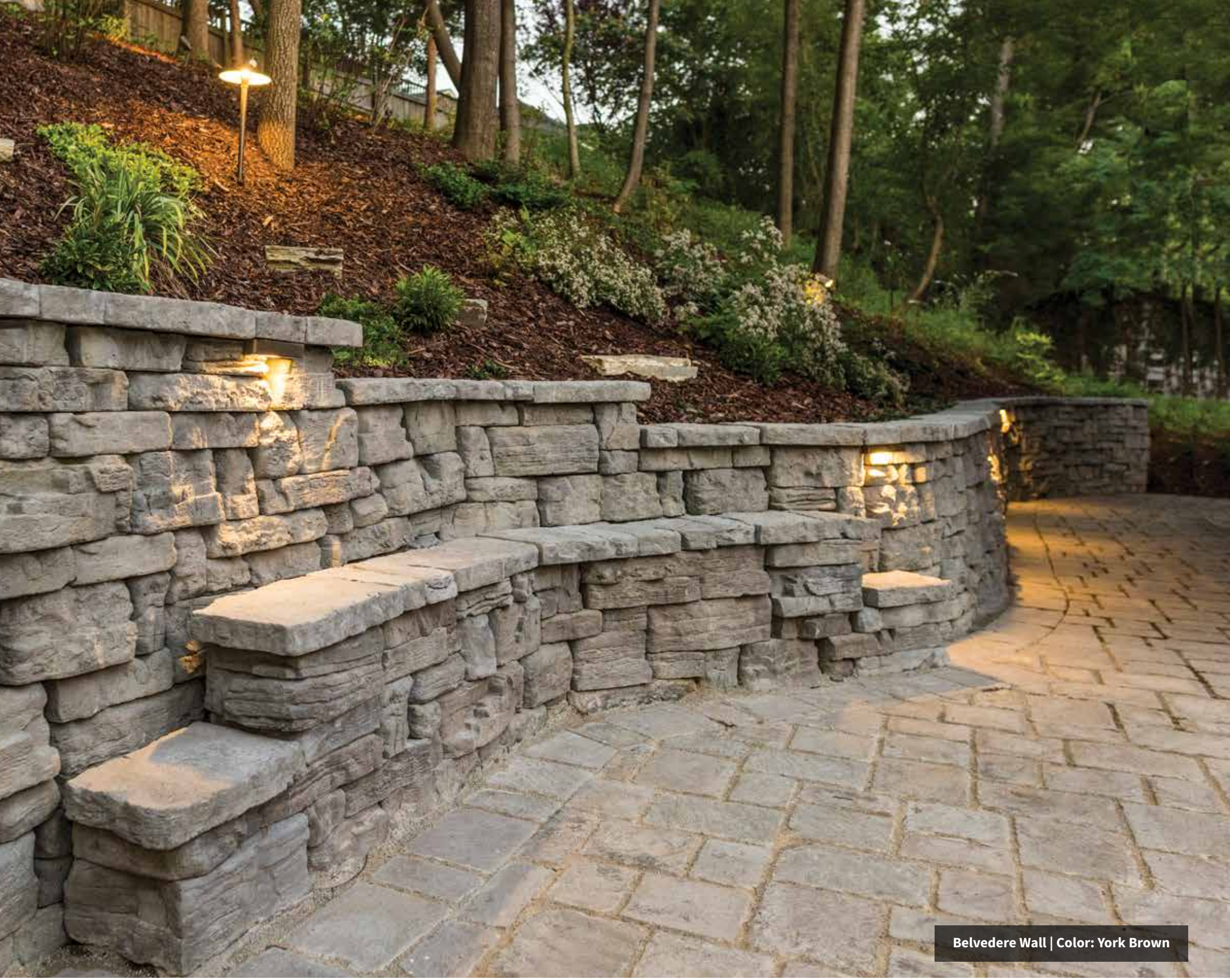
The symbol signifies that this product is suitable for building elevated wall heights using geogrid reinforcement or other design methods. Maximum heights are determined by wall unit weight and setback, soil conditions, slopes and surcharges. Consult a licensed engineer for design assistance.

## LIFETIME WARRANTY

Nicolock provides a limited lifetime warranty on the structural integrity of its manufactured product line used in residential applications. Nicolock pavers are warranted for as long as you own your home and are transferable to the next owner should you sell. Nicolock products installed in accordance with our guidelines and industry standards that are deemed to be structurally defective will be replaced with product of equal value. Removal and replacement labor cost is not the responsibility of Nicolock. Regarding de-icing products, Nicolock recommends sand for slip resistance as it is the most environmentally friendly product for use on concrete products to make sure surfaces are skid and slip resistant. If a de-icing product is used, Nicolock recommends using only NaCl (rock salt) and should be used sparingly, following the manufacturer's instructions. Once ice is loosened, remove immediately to avoid buildup of the de-icing agent. De-icing agents of any kind are not recommended for our Nicostone line.

Color matching and product availability are not guaranteed. Proof of purchase and/or installation contract must be made available prior to or at the time of inspection by an authorized Nicolock representative. Other exclusions apply.

Nicolock / Nicolica Concrete Products is the owner or authorized user of all patents and trademarks for products and designs illustrated herein. Firma®, Checker Block®, Sante-Euro® & paver-**shield**® are examples of registered trademarks of Nicolica Concrete Products. SF-Rima® is a trademark of SF Concrete Technology, Inc. Trinity® is a trademark of Earth Reinforcement Technologies. • US Patent # : Firma® 6,082,933.



Belvedere Wall | Color: York Brown

# LANDSCAPE WALLS



Stonegate® Contemporary | Color: Granite City Blend

Outdoor areas of any size or shape will be transformed with Nicolock's Landscape Wall Collection. Nicolock has the perfect selection of walls that will not only bring definition to your outdoor space but also work in harmony with the colors of our pavers. Strength, beauty and functionality are the hallmarks of Nicolock's wall stones, so you can build with confidence.

# LANDSCAPE WALLS

## COLONIAL WALL SYSTEM

The charming Colonial Wall System features a distinctive double-sided face, offered in a hard-split rock face finish. It is available in three face lengths and includes corner units (packaged on a combined pallet). You can build the 3" or 6" wall individually or combine them for added dimension. There is also a prepackaged Colonial Pier kit to complement your wall.



Mini Colonial Wall | Color: Oyster Blend



6" Colonial Wall | Color: Travertina

### MINI COLONIAL WALL SPECIFICATIONS

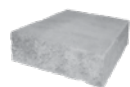
PRODUCT	SIZE	SF / PALLET	PCS / PALLET	LBS / PALLET
Large	3" x 16" x 9"	35	30	3,921
Medium	3" x 12" x 9"		50	
Small	3" x 9" x 9"		50	
Corner Unit	3" x 16" x 9"		20	



3" x 16" x 9"



3" x 12" x 9"



3" x 9" x 9"



Corner Unit: 3" x 16" x 9"

### 6" COLONIAL WALL SPECIFICATIONS

PRODUCT	SIZE	SF / PALLET	PCS / PALLET	LBS / PALLET
Large	6" x 16" x 9"	35	15	4,068
Medium	6" x 12" x 9"		25	
Small	6" x 9" x 9"		25	
Corner Unit	6" x 16" x 9"		10	



6" x 16" x 9"



6" x 12" x 9"



6" x 9" x 9"



Corner Unit: 6" x 16" x 9"

### MINI & 6" COLONIAL WALL COLORS



Adobe Blend



Bluestone\*



Cappuccino Blend\*



Chesapeake Blend\*



Crab Orchard Blend\*



Fire Island Blend



Golden Brown Blend



Granite City Blend



Lilac Blend



Mocha Blend



Oyster Blend\*



South Bay Blend\*



Travertina\*



Westchester Blend

# Landscape Walls

## 5" COLONIAL WALL

The 5" Colonial Wall is offered in a hard-split rock face finish. It features a double-sided face, available in three face lengths and includes corner units (packaged on a combined pallet). The tongue and groove locking mechanism will ensure a solid connection and helps facilitate rapid installation. It is perfect for a wide range of applications from garden and free-standing walls to fire pits. There is also a prepackaged Colonial Pier to add the finishing touch to your wall.



5" Colonial Wall | Color: Granite City Blend



5" Colonial Wall | Color: Oyster Blend

### 5" COLONIAL WALL COLORS



Adobe Blend



Bluestone\*



Chesapeake Blend\*



Crab Orchard Blend\*



Fire Island Blend



Golden Brown Blend



Oyster Blend\*



Granite City Blend



Travertina\*



Westchester Blend

### 5" COLONIAL WALL SPECIFICATIONS

PRODUCT	SIZE	SF / PALLET	PCS / PALLET	LBS / PALLET
Large	5" x 16" x 9"	35	18	3,548
Medium	5" x 12" x 9"		30	
Small	5" x 9" x 9"		30	
Corner Unit	5" x 16" x 9"		12	



5" x 16" x 9"



5" x 12" x 9"



5" x 9" x 9"



Corner Unit: 5" x 16" x 9"



# LANDSCAPE WALLS

## VERONA WALL

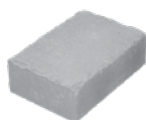
The Verona Wall's antiqued double-sided finish mirrors the look of natural stone. It is also available in Contemporary finish with a smooth edge. It's a versatile wall to construct almost any outdoor feature including free-standing walls, steps, outdoor kitchens and fireplaces. There is also a prepackaged Verona Pier kit to complement your wall.



Verona Wall | Color: Granite City Blend

### VERONA WALL SPECIFICATIONS

SIZE	PCS / SF	SF / PALLET	PCS / PALLET	LBS / PALLET
4" x 12" x 8"	3	32	96	2,739



4" x 12" x 8"

### VERONA WALL COLORS



Adobe Blend



Bluestone\*



Charcoal



Chesapeake Blend\*



Crab Orchard Blend\*



Golden Brown Blend



Granite City Blend



Oceanic Blue\*



Oyster Blend\*



South Bay Blend\*



Travertina\*



Westchester Blend



Verona Wall | Color: Adobe Blend and Granite City Blend

\*Premium Colors





**STONEGATE®  
CONTEMPORARY**

# Landscape Walls

The 3-piece Stonegate® Contemporary Wall System features a unique, modern contemporary finish on three sides. It's offered in three face lengths (packaged on the same pallet) and also available in a cap.



Stonegate® Contemporary | Color: Granite City Blend and Charcoal

**STONEGATE® CONTEMPORARY COLORS**



\*Premium Colors

- Versatile wall system. One pallet does it all, retaining, free-standing, seating walls and columns
- Specialized pin system allows vertical to 1" setback build
- Excellent for straight, curved and terraced wall designs

**STONEGATE® CONTEMPORARY WALL SPECIFICATIONS**

PRODUCT	SIZE	SF / PALLET	PCS / PALLET	LBS / PALLET
Large	6" x 16"/14" x 10"	30	20	2,532
Medium	6" x 12"/10" x 10"		20	
Small	6" x 6"/4" x 10"		20	
Cap	3" x 12"/10" x 11"	88 LF	120	1,196

Made in New York, additional freight rates may apply.



6" x 16"/14" x 10"



6" x 12"/10" x 10"



6" x 6"/4" x 10"



Cap: 3" x 12"/10" x 11"  
SOLD SEPARATELY



1/2" X 4 3/4" Shouldered Pins  
SOLD SEPARATELY

# LANDSCAPE WALLS

## CLAREMONT WALL

Linear, horizontal proportions evoke a contemporary yet classic stone appearance. Each unit is finished on both the front and back surfaces, allowing for both freestanding and retaining walls. Crisp, chiseled stone texture is indistinguishable from natural shaped limestone drywall.



Claremont Wall | Color: York Brown

### CLAREMONT WALL SPECIFICATIONS

PRODUCT	SIZE	SF / PALLET	PCS / PALLET	LBS / PALLET
Large	4" x 24" x 8"	29	25	2,800
Medium	4" x 18" x 8"		25	
Corner Unit	4" x 22" x 8"	na	40	2,200



4" x 24" x 8"



4" x 18" x 8"



Corner Unit: 4" x 22" x 8"  
SOLD SEPARATELY

### CLAREMONT WALL COLORS



Bluestone



Mocha



York Brown



# Landscape Walls

## BELVEDERE WALL

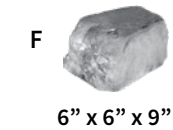
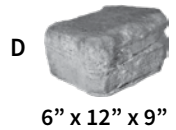
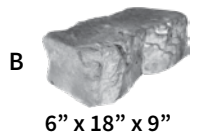
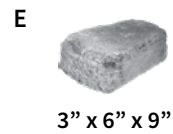
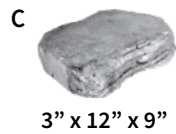
A Belvedere Wall provides the rich texture of quarried stone for an organic finish without the expense. Create a warm, rustic silhouettes with Belvedere.



Belvedere Wall | Color: Mocha

### BELVEDERE WALL SPECIFICATIONS

PRODUCT	SIZE	SF / PALLET	PCS / PALLET	LBS / PALLET
A	3" x 18" x 9"	27	12	2,475
B	6" x 18" x 9"		12	
C	3" x 12" x 9"		12	
D	6" x 12" x 9"		12	
E	3" x 6" x 9"		12	
F	6" x 6" x 9"		12	



### BELVEDERE WALL COLORS



Bluestone



Mocha



York Brown



# LANDSCAPE WALLS

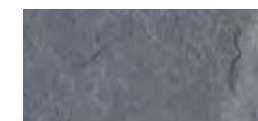
## KODAH WALL

Kodah wall is a one-of-a-kind large scale retaining wall system. It's modern, linear proportions combined with its rough, quarried stone texture make it perfect for a variety of applications. The Kodah wall also makes it easier than ever to provide you with the big block look without the over the top installation costs.



Kodah Wall | Color: Bluestone

### KODAH WALL COLORS



Bluestone



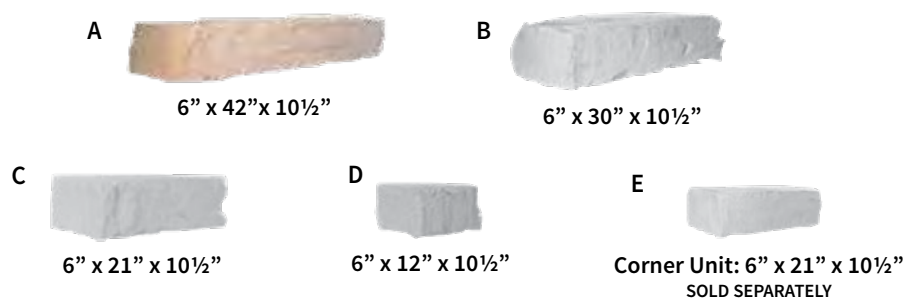
Mocha



York Brown



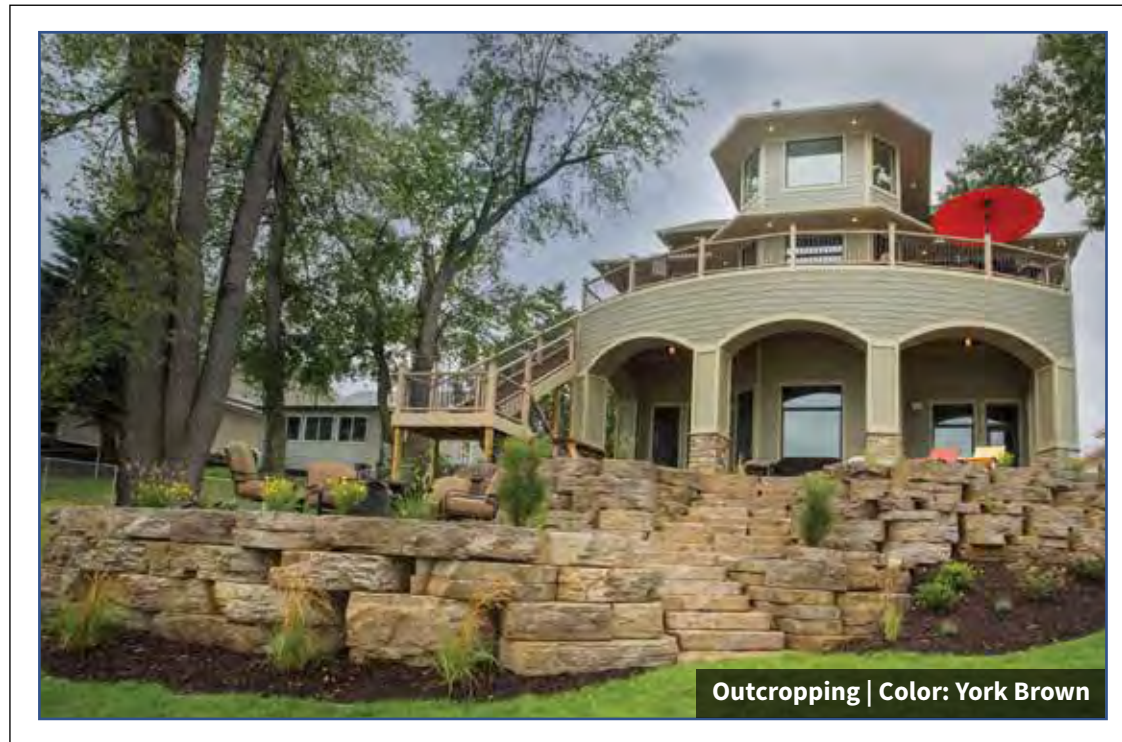
ROSETTA  
*by Rosetta*



### KODAH WALL SPECIFICATIONS

PRODUCT	SIZE	SF / PALLET	PCS / PALLET	LBS / PALLET
A	6" x 42" x 10 1/2"	21	6	2,400
B	6" x 30" x 10 1/2"		3	
C	6" x 21" x 10 1/2"		6	
D	6" x 12" x 10 1/2"		3	
Corner Unit	6" x 21" x 10 1/2"	31 1/2	24	

# R E T A I N I N G   W A L L S



Nicolock's retaining walls are available in a wide variety of styles and colors, offering numerous design possibilities. Our retaining walls can be used to create a barrier to prevent erosion or capture additional outdoor space by leveling the grade that might otherwise be uneven or sloped. Typically, a retaining wall may be part of a system that includes geogrid and may require engineering. You can count on Nicolock's residential and commercial retaining walls to add natural beauty to any outdoor space.

# RETAINING WALLS

## FIRMA WALL

The Firma Wall is a segmental retaining wall with a natural split-face texture. It's classic line complements any natural or architectural landscape. A solid block with tapered sides, this wall system combines rich color, form and function to your project.



Firma Wall | Color: Adobe Blend

### FIRMA WALL COLORS



Adobe Blend



Crab Orchard Blend\*



Golden Brown Blend



Granite City Blend

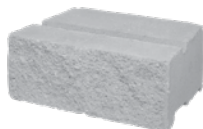


Mojave



Oyster Blend\*

6" x 16" x 12"



### FIRMA WALL SPECIFICATIONS

SIZE	PCS / SF	SF / PALLET	PCS / PALLET	LBS / PALLET
6" x 16" x 12"	1.5	26.6	40	3,187

# Retaining Walls

## EVERLOC™ 810 EXPRESS WALL

Everloc™ is a lightweight, one-square foot retaining wall system. Dress joints and radius edges create a three-piece, random appearance from one basic shape. System consists of a wall unit, corner, utility (to maintain bond at ninety degree outside corners), and a cap. Hollow core design and unique locking mechanism allows for quick and easy installation. Everloc™ is a user friendly system with little to no saw cutting due to its cutting edge corner and utility combo design.



Everloc™ 810 Express Wall | Color: Beige / Brown

### EVERLOC™ 810 EXPRESS WALL COLORS



Beige / Brown



Charcoal / Buff

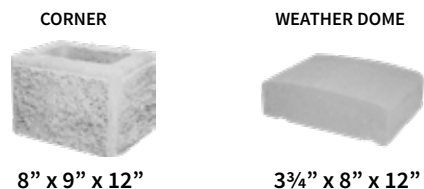
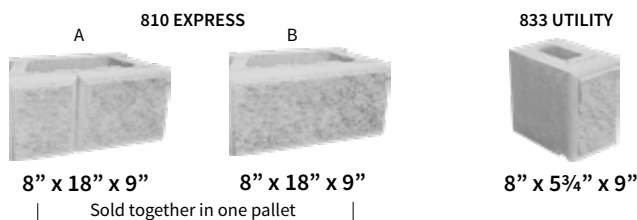


Charcoal / Grey

### EVERLOC™ 810 EXPRESS WALL SPECIFICATIONS

PRODUCT	SIZE	SF / PALLET	PCS / PALLET	LBS / PALLET
810 Express A	8" x 18" x 9"	32	32	1,793
810 Express B	8" x 18" x 9"			
833 Utility	8" x 5¾" x 9"	31	96	1,227
Corner Unit	8" x 9" x 12"	37.33	64	1,495
Weather Dome	3¾" x 8" x 12"	64 l.f.	96	1,566

- Lighter weight = faster installation, less freight
- Multi piece look in a single piece system
- Bidirectional locking mechanism assists in installation speed.



# RETAINING WALLS

## ALTA WALL

Alta Wall is a versatile wall for everyday landscape applications. Its tapered design simplifies installation of inside and outside curves so you can design with freedom. The hollow core design and rear lip connection make this wall system a go to system for professionals.

### ALTA WALL COLORS



Beige / Brown



Charcoal / Buff



Charcoal / Grey



Charcoal / Red



Alta Wall | Color: Charcoal / Buff

6" x 16" x 12"



6" x 8" x 12"  
6" corner unit  
SOLD SEPARATELY



### ALTA WALL SPECIFICATIONS

SIZE	PCS / SF	SF / PALLET	PCS / PALLET	LBS / PALLET
6" x 16" x 12"	1.5	26.6	40	1,962
Corner: 6" x 8" x 12"	2	24	48	2,088



# Retaining Walls

## ALTA PRO WALL

A taller version of our beautiful Alta Wall, this system helps landscape and hardscape professionals create stunning outdoor living space with structural integrity.



Alta Pro Wall | Color: Charcoal / Grey

### ALTA PRO WALL COLORS



Beige / Brown



Charcoal / Buff



Charcoal / Grey



Charcoal / Red

### ALTA PRO WALL SPECIFICATIONS

SIZE	PCS / SF	SF / PALLET	PCS / PALLET	LBS / PALLET
8" x 18" x 12"	1	32	32	2,404
Corner: 8" x 18" x 9"	1	32	32	2,800



8" x 18" x 12"



8" x 18" x 9"  
8" corner unit  
SOLD SEPARATELY

# RETAINING WALLS

## TRINITY® WALL

Trinity Wall is a pin-less, square foot block designed for small and large engineered applications. Trinity's vertically aligned core allows for efficient and complete stone fill. It's single sided face in is available in three color mixes to enhance any environment with functional design and beauty. Special order.

### TRINITY® WALL COLORS



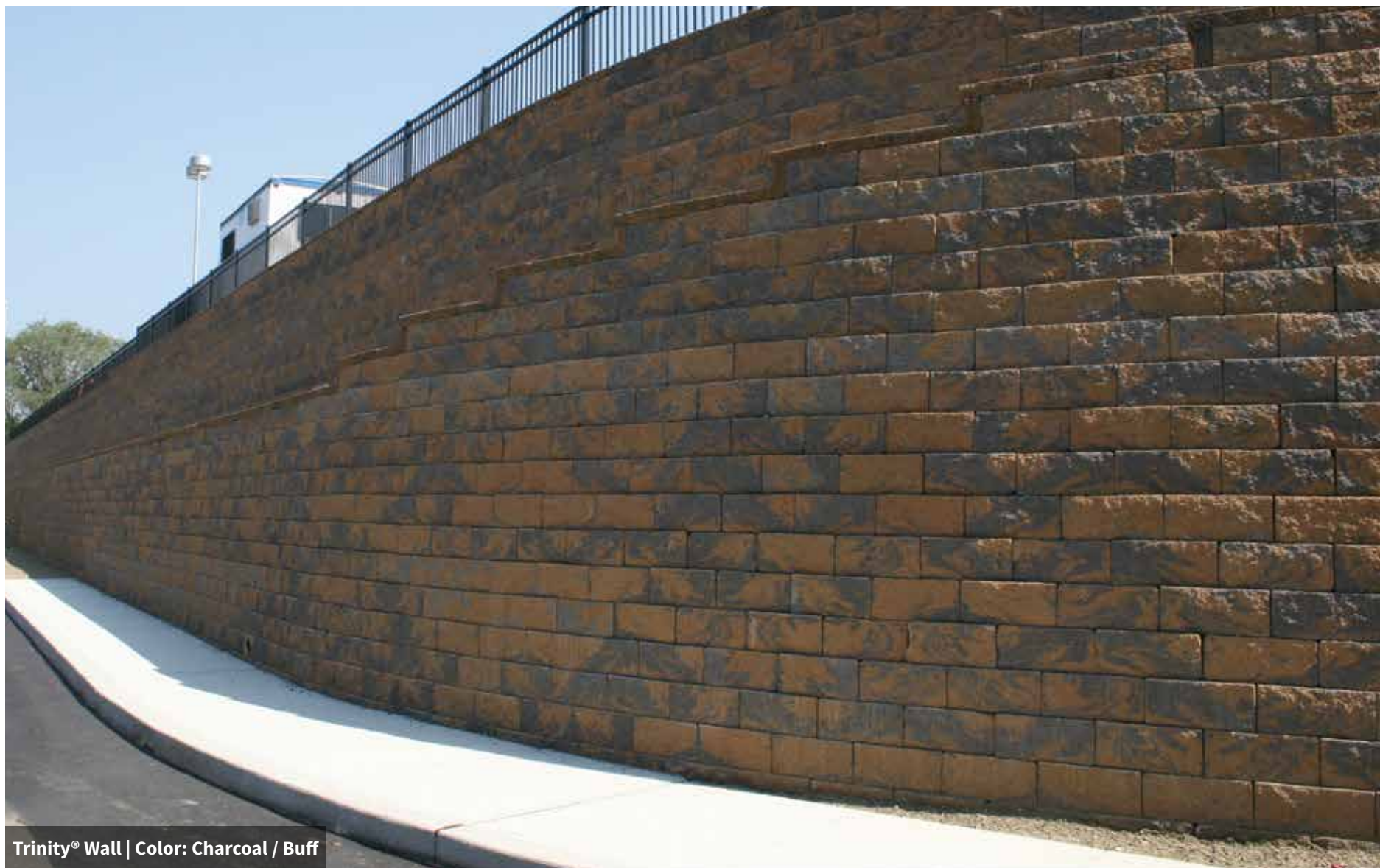
Beige / Brown



Charcoal / Buff



Charcoal / Grey



Trinity® Wall | Color: Charcoal / Buff



8" x 18" x 12"

### TRINITY® WALL SPECIFICATIONS

SIZE	PCS / SF	SF / PALLET	PCS / PALLET	LBS / PALLET
8" x 18" x 12"	1	32	32	2,676



## KEYSTONE® COMPAC III STRAIGHT SPLIT

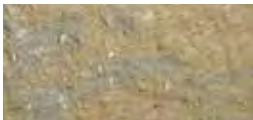
# Retaining Walls

The Compac III's shape allows for tight radius curves and vertical core alignments. This wall can do it all with vertical or battered setback construction options. With triangular shaped receiving holes, your construction adjustments are simplified. Natural stone appearance and rich colors complement any setting.

### COMPAC III STRAIGHT SPLIT COLORS



Beige / Brown



Charcoal / Buff



Charcoal / Grey



Charcoal / Red



Keystone® Compac III Straight Split | Color: Charcoal / Grey

- Maximum versatility and performance
- Ease of installation
- Natural stone texture appearance



1/2" x 5 1/4" Fiberglass Alignment Pins  
SOLD SEPARATELY



8" x 18" x 12"

### COMPAC III STRAIGHT SPLIT SPECIFICATIONS

SIZE	PCS / SF	SF / PALLET	PCS / PALLET	LBS / PALLET
8" x 18" x 12"	1	32	32	2,417



# RETAINING WALLS

## OUTCROPPING

With this large rock landscaping look, your new retaining wall, stairs or poolscape will stand out among your neighbors. Get the look you want without sacrificing the structurally sound solution you need.

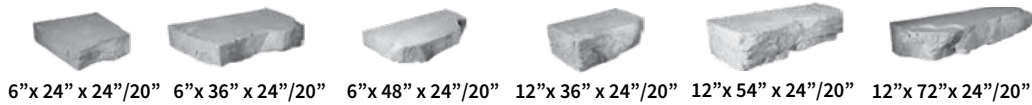
### OUTCROPPING PALLET A SPECIFICATIONS

PRODUCT	SIZE	SF / PALLET	PCS / PALLET	LBS / PALLET
A	12"x 42" x 24"/20"	18	4	4,000
B	12"x 48" x 24"/20"			
C	12"x 60" x 24"/20"			
D	12"x 66" x 24"/20"			



### OUTCROPPING PALLET B SPECIFICATIONS

PRODUCT	SIZE	SF / PALLET	PCS / PALLET	LBS / PALLET
A	6"x 24" x 24"/20"	18	6	4,000
B	6"x 36" x 24"/20"			
C	6"x 48" x 24"/20"			
D	12"x 36" x 24"/20"			
E	12"x 54" x 24"/20"			
F	12"x 72" x 24"/20"			



### OUTCROPPING PALLET C SPECIFICATIONS

PRODUCT	SIZE	SF / PALLET	PCS / PALLET	LBS / PALLET
A	6"x 24" x 24"/20"	18	4	4,000
B	6"x 36" x 24"/20"			
C	18"x 60" x 24"/20"			
D	24"x 48" x 24"/20"			



### CORNERS SPECIFICATIONS

SIZE	PCS / PALLET	LBS / PALLET
6" x 39" x 27"	8	1,920
12" x 48" x 30"	4	4,680



### OUTCROPPING COLORS



Bluestone



Mocha



York Brown



ROSETTA  
by Reinbeck

# GARDEN WALLS



Whatever Nicolock garden wall style you select, you will have a variety of sizes and colors to choose from. The addition of a garden wall can help provide visual interest acting as a border between an installed feature and the rest of the landscape. Garden walls are low walls and not meant to withstand the weight or pressure of soil. They are best suited for tree rings, edgings and garden borders.

# GARDEN WALLS

## SIERRA WALL

A beautiful 4"x12" wall that has a soft split face texture and rear lip connection. The single-sided wall system has tapered sides and a 1" setback per course.

### SIERRA WALL COLORS



Adobe Blend



Charcoal



Crab Orchard Blend\*



Fire Island Blend



Granite City Blend



Mojave

\*Premium Colors



Sierra Wall | Color: Adobe Blend



4" x 12" x 8"

### SIERRA WALL SPECIFICATIONS

SIZE	PCS / SF	SF / PALLET	PCS / PALLET	LBS / PALLET
4" x 12" x 8"	3	32	96	2,319

# Garden Walls

## SERAFINA WALL

Serafina Wall's trapezoid shape and split face on two sides makes it a multifaceted solution for many hardscape applications. From straight and curved walls, single or two-sided borders for your garden, Serafina is a great option where walls less than three feet high are demanded. Available in colors for every home.



Serafina Wall | Color: Granite City Blend and Adobe Blend

### SERAFINA WALL COLORS



Adobe Blend



Bluestone\*



Crab Orchard Blend\*



Fire Island Blend



Golden Brown Blend



Granite City Blend



Oyster Blend\*



Travertina\*



Westchester Blend

\*Premium Colors

### SERAFINA WALL SPECIFICATIONS

SIZE	PCS / SF	SF / PALLET	PCS / PALLET	LBS / PALLET
4" x 10" x 9"	3.5	17	60	1,519

4" x 6" x 9"



4" x 10" x 9"

# GARDEN WALLS

## MOUNTAIN BLOCK

Mountain Block's single sided face provides a unique stone texture with its 4" x 12" wall face. Solid block makes this system structurally sound for walls with maximum height of 36". Its organic design stylishly connects your home to its natural surroundings. Nicolock's Rockface Multi-Cap can be used to add the finishing touch to a great outdoor setting.



Mountain Block | Color: York Brown



4" x 12" x 8"



Corner: 4" x 12" x 8"

### MOUNTAIN BLOCK SPECIFICATIONS

SIZE	SF / PALLET	PCS / PALLET	LBS / PALLET	LBS / PALLET
4" x 12" x 8"	16	48	28	1,360
Corner: 4" x 12" x 8"	16	24	32	775

### MOUNTAIN BLOCK WALL COLORS



Bluestone



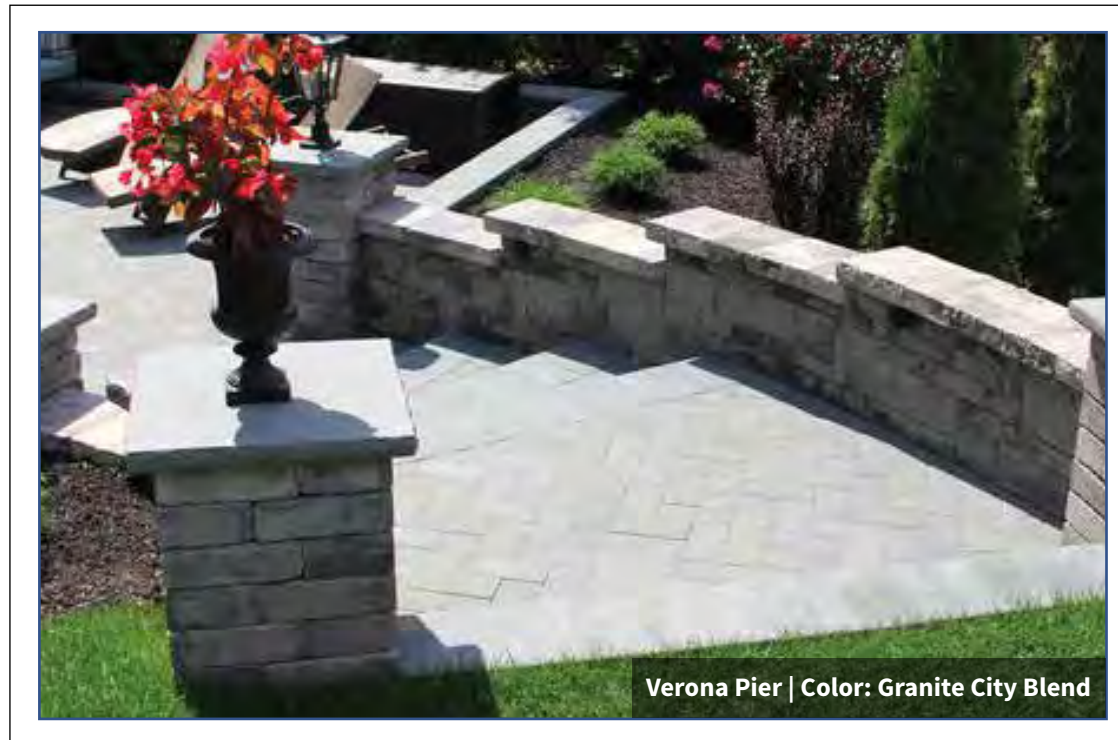
Mocha



York Brown



# P I E R S • C O P I N G • C A P S



With Nicolock's selection of Piers, Coping and Caps you are certain to find the perfect style and color to suit your design. Our piers and caps bring a stylish appearance while providing a setting for additional lighting. Nicolock's wall caps and coping provides just the right finish to your installation. They are available in a variety of styles, sizes and colors to perfectly complement any of Nicolock's wall styles.

## PIERS & CAPS

Nicolock Piers and Caps provide a beautiful finishing touch to any wall system. Choose from a variety of styles and vivid colors to complement your outdoor project.



Mini Colonial Pier | Color: Oyster Blend



5" Colonial Pier | Color: Granite City Blend



Verona Pier | Color: Granite City Blend

**MINI COLONIAL PIER KIT** Offered in a hard-split rock face finish. Cap not included.

**Builds Per Pallet:**

One: 24" x 24" x 60" high pier – or – Two: 24" x 24" x 30" high piers

**MINI COLONIAL PIER KIT SPECIFICATIONS**

SIZE	SF / PALLET	PCS / PALLET	LBS / PALLET
3" x 14¾" x 9"	40	80	2,620

**5" COLONIAL PIER KIT** Offered in a hard-split rock face finish. Cap not included.

**Builds Per Pallet:**

One: 24" x 24" x 70" high pier – or – Two: 24" x 24" x 35" high piers

**5" COLONIAL PIER KIT SPECIFICATIONS**

SIZE	SF / PALLET	PCS / PALLET	LBS / PALLET
5" x 14¾" x 9"	46.6	56	2,849

**VERONA PIER KIT** Offered in an antiqued finish that mirrors the look of natural stone. It is also available in Contemporary finish with a smooth edge. Cap not included.

**Builds Per Pallet:**

Two: 20" x 20" x 48" high piers

**VERONA PIER KIT SPECIFICATIONS**

SIZE	SF / PALLET	PCS / PALLET	LBS / PALLET
4" x 12" x 8"	32	96	2,739

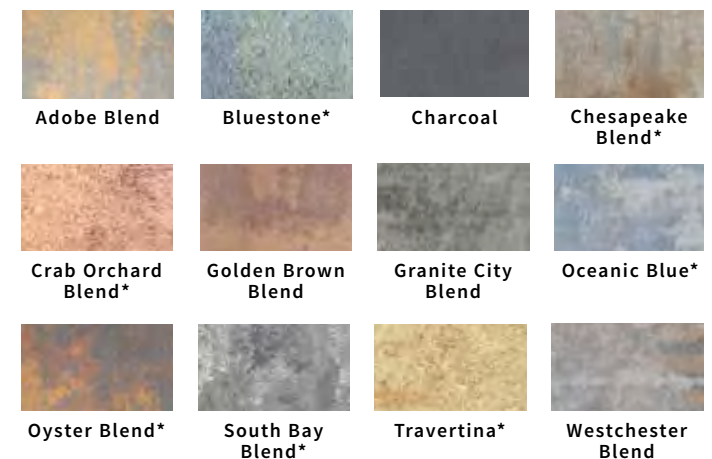
**MINI AND 5" COLONIAL PIER COLORS**



**ADDITIONAL MINI COLONIAL PIER COLORS**



**VERONA PIER COLORS**



\*Premium Colors

# Piers • Coping • Caps

**STONEGATE® CONTEMPORARY PIER** | New From Nicolock! With a pallet you can make: One – 20”x 20” x 60” or Two - 20”x 20”x 30” or One – 30”x 30”x 30” pier

## STONEGATE® CONTEMPORARY PIER SPECIFICATIONS

PRODUCT	SIZE	SF / PALLET	PCS / PALLET	LBS / PALLET
Large	6” x 16”/14” x 10”	30	60	2,532
Medium	6” x 12”/10” x 10”			
Small	6” x 6”/4” x 10”			
Cap	3” x 12”/10” x 11”	66 l.f.	72	2,150

**NEW FROM  
NICOLOCK!**

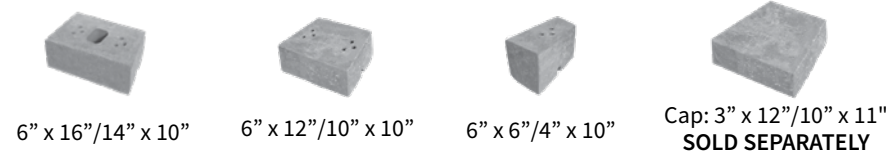


**NEW!** Stonegate® Contemporary Pier | Color: Charcoal



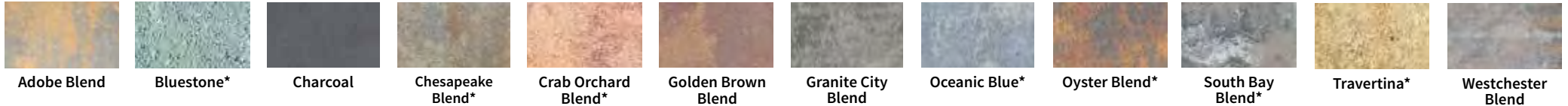
1/2” x 4 3/4” Shouldered Pins  
SOLD SEPARATELY

Made in New York, additional freight charges may apply.



6” x 16”/14” x 10”    6” x 12”/10” x 10”    6” x 6”/4” x 10”    Cap: 3” x 12”/10” x 11”  
SOLD SEPARATELY

## STONEGATE® CONTEMPORARY PIER COLORS



**CLIFROCK PRE-MADE PIER KIT** | Easy to install, makes one pier. Pier Cap sold separately.

## CLIFROCK PRE-MADE PIER SPECIFICATIONS

24” x 24” x 36”	1 pier
30” x 30” x 36”	1 pier

**NEW FROM  
NICOLOCK!**



**ClifRock Pre-Made Pier** | Color: NY Bluestone

## CLIFROCK PRE-MADE PIER COLORS



## CLIFROCK PRE-MADE PIER TEXTURE



**CORNERS** | Nicolock offers other Pier styles using the following wall products:

### 6” CORNER

Offered in a hard-split rock face texture

#### Builds Per Pallet

One: 20” x 20” x 72” H or Two: 20” x 20” x 36” H Piers



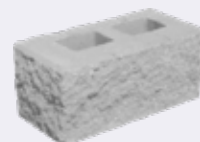
6” x 8” x 12”

### 8” CORNER

Offered in a hard-split rock face texture

#### Builds Per Pallet

One: 27” x 27” x 64” H Pier or Two: 27” x 27” x 32” H Piers



8” x 18” x 12”

### 8” EVERLOC™ CORNER

Features a clean classic face appearance.

#### Builds Per Pallet

One: 21” x 21” x 128” H Pier or Two: 21” x 21” x 64” H Piers



8” x 9” x 12”



**Belvedere Pier | Color: Mocha**

## BELVEDERE PIER AND CAP ROSETTA by Nicolock

Corner blocks are used to build the pier, multiple textures provide a random look for your finished project. Cap provides the finishing touch as well as additional landscape lighting possibilities.

### **Builds Per Pallet (corner units):**

One: 24" x 24" x 36" high pier

### BELVEDERE PIER SPECIFICATIONS

SIZE	SF / PALLET	PCS / PALLET	LBS / PALLET
3" x 15" x 9"	24	16	1,520
6" x 15" x 9"			



**CAP: 27" x 27" x 2 1/2"**



**Claremont Pier | Color: Mocha**

## CLAREMONT PIER AND CAP ROSETTA by Nicolock

Corner blocks are used to build the pier. The cap provides the finishing touch as well as additional landscape lighting possibilities.

### **Builds Per Pallet (corner units):**

One: 30" x 30" x 40" high pier

### CLAREMONT PIER SPECIFICATIONS

SIZE	SF / PALLET	PCS / PALLET	LBS / PALLET
4" x 22" x 8"	32	40	2,200



**CAP: 34" x 34" x 3"**



**Kodah Pier and Cap | Color: Gironde\***

\*special order



**CAP: 34" x 34" x 3"**

## KODAH PIER AND CAP ROSETTA by Nicolock

Corner blocks are used to build the pier. The cap provides the finishing touch as well as additional landscape lighting possibilities.

**Builds Per Pallet (corner units):** One: 32" x 32" x 36" high pier

### KODAH PIER SPECIFICATIONS

SIZE	SF / PALLET	PCS / PALLET	LBS / PALLET
6" x 21" x 10 1/2"	31 1/2	24	2,400

### BELVEDERE AND KODAH PIER COLORS



Bluestone



Mocha



York Brown

Nicolock offers other Pier styles using the following wall products:

**6" CORNER** offered in a hard-split rock face texture

One: 20" x 20" x 72" H or Two: 20" x 20" x 36" H



### **Builds Per Pallet**

6" x 8" x 12"

**8" CORNER** offered in a hard-split rock face texture

One: 27" x 27" x 64" H Pier or Two: 27" x 27" x 32" H



### **Builds Per Pallet**

8" x 18" x 9"

**8" EVERLOC™ CORNER** features a clean classic face appearance. One: 21" x 21" x 128" H Pier or Two 21" x 21" x 64" H



### **Builds Per Pallet**

8" x 9" x 12"

## PIER CAPS

Top off your pier in style with one of our many pier caps. The flat cap offers a clean, chiseled stone edge while providing a sturdy platform for additional landscape lighting.



**Pier Cap | Color: Bluestone**

### **Pier Cap Sizes:**

18" x 18" x 2 1/2"

20" x 20" x 2 1/2"

25" x 25" x 2 1/2"

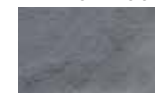
24" x 24" x 3"

26" x 26" x 3"

28" x 28" x 3"

30" x 30" x 3"

### PIER CAP COLORS



Bluestone



Brown



Gironde\*



York Brown

\*Premium Colors

# Piers • Coping • Caps



Multi Cap | Color: Adobe Blend

**MULTI CAP** Features a hard-split face design on one edge. Suitable for single-sided walls but also compatible with all Nicolock Walls.

## MULTI CAP SPECIFICATIONS

PCS / PALLET	LF / PALLET	LBS / PALLET
64	85	2,240



3" x 16" x 12"

## MULTI CAP COLORS



Dimensional Coping | Color: York Brown

**DIMENSIONAL COPING** Features chiseled stone texture on two sides and compatible with all Nicolock Walls.

## DIMENSIONAL COPING SPECIFICATIONS

SIZE	PCS / PALLET	LF / PALLET	LBS / PALLET
2½" x 18" x 12½"	18	61	500
2½" x 19" x 12½"	12		
2½" x 24" x 12½"	4		

Combined pallet



2½" x 18" x 12½"

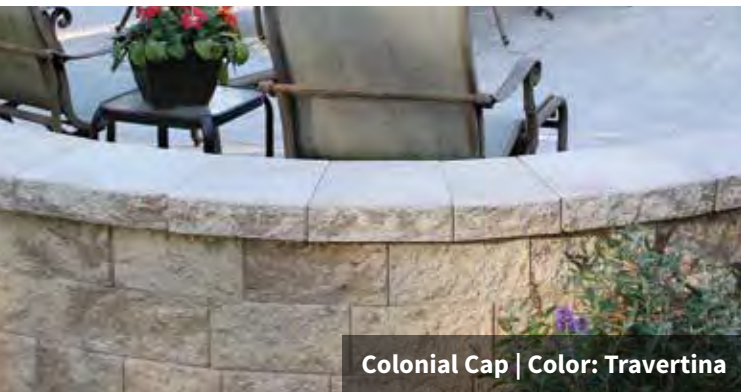


2½" x 19" x 12½"



2½" x 24" x 12½"

## DIMENSIONAL COPING COLORS



Colonial Cap | Color: Travertina

**COLONIAL CAP** is offered in both hard-split rock face and Toscana antiqued finished on two sides. Corners can be split trapezoid shapes suitable for Colonial Wall Systems but also compatible with any Nicolock Wall.

## COLONIAL CAP SPECIFICATIONS

SIZE	PCS / PALLET	LF / PALLET	LBS / PALLET
3" x 9" x 12 ½"	40	108	3,640
3" x 12" x 12 ½"	40		
3" x 15" x 12 ½"	20		
Corner	20		

Combined pallet



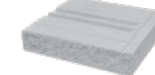
3" x 9" x 12 ½"



3" x 12" x 12 ½"



3" x 15" x 12 ½"



3" x 15" x 12 ½"  
Corner

## COLONIAL CAP COLORS



\*Premium Colors



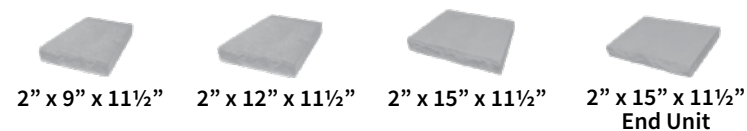
Rockface Multi Cap | Color: Mocha

**ROCKFACE MULTI CAP** Features cast stone texture on two sides. Trapezoid shapes and available in two widths compatible with any Nicolock Wall.

### ROCKFACE MULTI CAP STANDARD SPECIFICATIONS

SIZE	PCS / PALLET	LF / PALLET	LBS / PALLET
2" x 9" x 11 1/2"	14	11	1,200
2" x 12" x 11 1/2"	14	14	
2" x 15" x 11 1/2"	14	18	
End Unit	4	5	

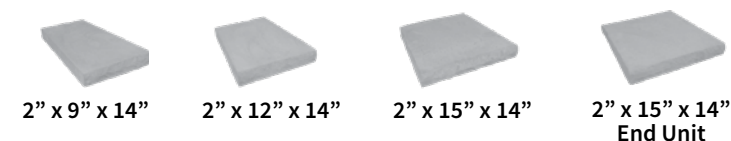
Combined pallet



### ROCKFACE MULTI CAP GRANDE SPECIFICATIONS

SIZE	PCS / PALLET	LF / PALLET	LBS / PALLET
2" x 9" x 14"	14	11	1,400
2" x 12" x 14"	14	14	
2" x 15" x 14"	14	18	
End Unit	4	5	

Combined pallet



### ROCKFACE MULTI CAP COLORS



\*Premium Colors



Belvedere Coping | Color: York Brown

**BELVEDERE COPING** creates the rustic appearance of natural stone and complements our Belvedere Wall.

### BELVEDERE COPING SPECIFICATIONS

SIZE	PCS / PALLET	LF / PALLET	LBS / PALLET
2 1/4" x 6" x 10 1/4"	24	66	1,550
2 1/4" x 12" x 10 1/4"	12		
2 1/4" x 18" x 10 1/4"	6		
End Unit Left	6		
End Unit Right	10		

Combined pallet



2 1/4" x 6" x 10 1/4" | 2 1/4" x 12" x 10 1/4" | 2 1/4" x 18" x 10 1/4"

Two End Units (Left & Right): 2 1/4" x 18" x 10 1/4"  
The end units are useful for constructing corners/ends, finished on front, back, top, and one side.

### BELVEDERE COPING COLORS



ROSETTA  
*by Handlock*

# Piers • Coping • Caps

**OLD TOWN COPING** | Rectangular shapes and dimpled surface give this coping a unique look. Texture edges add a special charm. No spacer lugs needed.

## OLD TOWN COPING SPECIFICATIONS

SIZE	SF / BAND	LF / PALLET	LBS / PCS	LBS / PALLET
½”h x 8”l x 12”d Straight Unit	20	30	30	600
1½”h x 18”l x 12”d Curved (60 degree radius)	20	30	30	600
1½”h x 12”l x 12”d Outside Corner	as required	na	12	na
1½”h x 18”l x 18”d Inside Corner			18	



1½”h x 18”l x 12”d

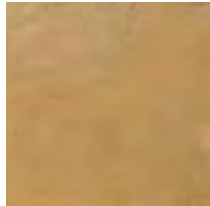


1½”h x 12”l x 12”d  
Outside Corner



1½”h x 18”l x 18”d  
Inside Corner

## OLD TOWN COPING COLORS



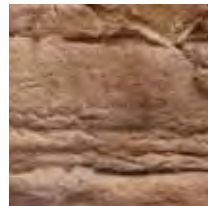
Autumn Cotswold



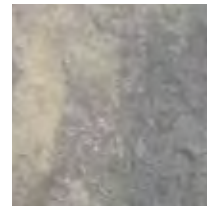
Bluestone



Gironde\*



Mocha



York Brown



Old Town Coping | Color: Gironde

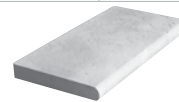
**VERSAILLES COPING** | Flat surface with natural travertine markings. Fullnose on one side. Inside and outside corners available.



Versailles Coping | Color: Gironde

## VERSAILLES COPING SPECIFICATIONS

SIZE	PCS / SF	SF / PALLET	LBS / PCS	LBS / PALLET
1½” x 12” x 24”	.5	15	-	493
1½” x 12” x 12” Outside Corner	as required	na	12	na
1½” x 18” x 18” with 6” notch Inside Corner			18	



1½” x 12” x 24”



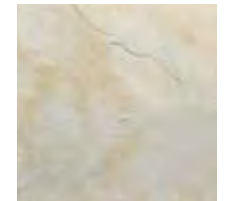
1½” x 12” x 12”  
Outside Corner



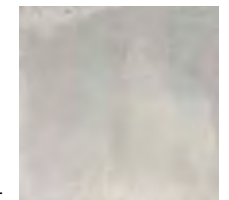
1½” x 18” x  
18” with 6” notch  
Inside Corner

\*Premium color

## VERSAILLES COPING COLORS



Gironde\*

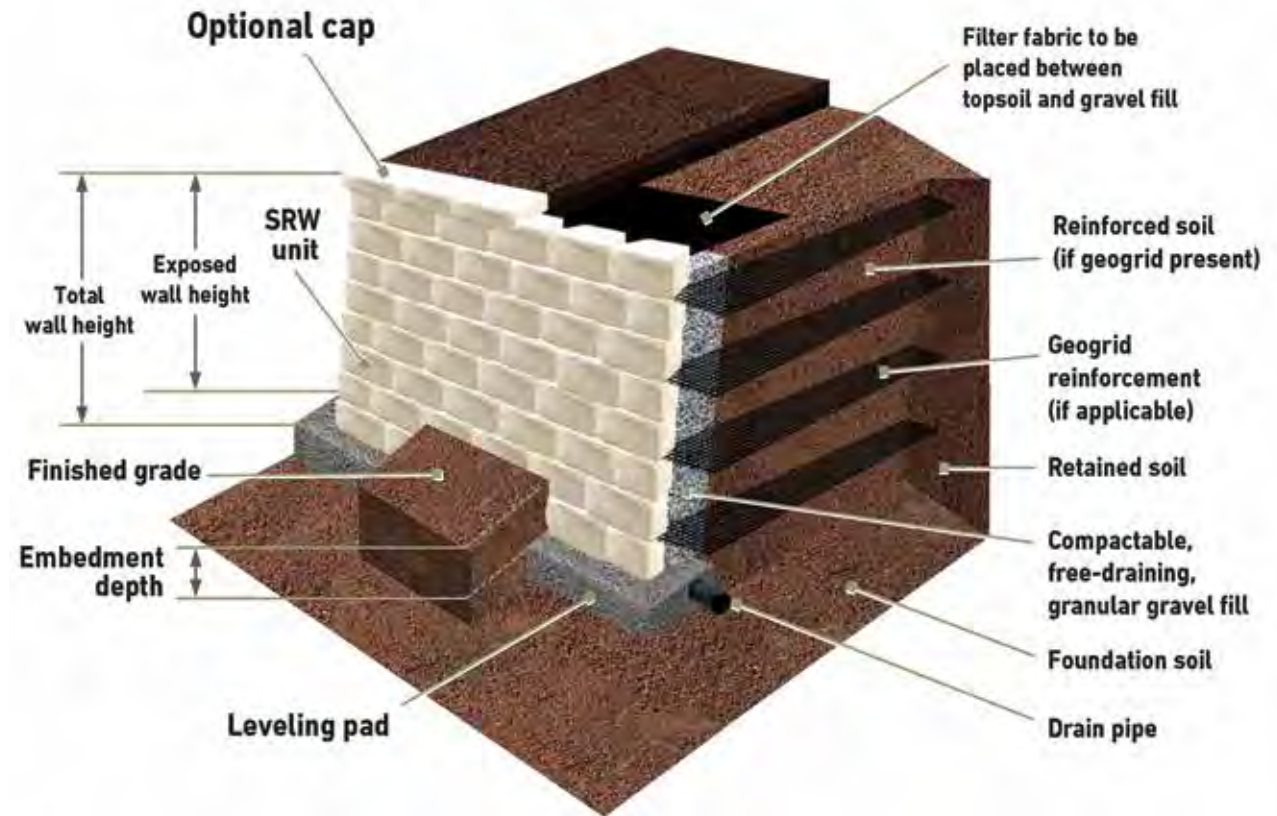


Marble Blend\*

# RETAINING WALL INSTALLATION

## Materials Needed

- Gloves
- Tape Measure
- Stakes
- Shovel
- 3 lb. Hammer
- Levels
- Line Level
- Carpenters Square
- String Line
- Broom
- Wheelbarrow
- Pry Bar
- Wire Cutters
- Mason's Chisel
- Markers
- Screed Board
- Two 1" o.d. Screed Pipes
- Plate Compactor
- Paver Cutter
- Diamond Blade Table Saw



NOTE: The following Installing procedures apply to all Nicolock retaining wall units constructed as a conventional gravity wall system.

PREPARING/EXCAVATING: Before beginning excavation, make sure there are no utility lines in the wall area. Excavate area to the proper depth. For geogrid-reinforced retaining walls or for more detailed information, consult your local distributor or contact Nicolock.

For most non-critical walls (and under favorable soil conditions) Nicolock wall units are constructed as a conventional gravity wall system. Walls up to 3 feet in height (2 ft. 6 in. for Sierra) are attainable without the need for soil reinforcement (geogrid). Recommended installation procedures should be followed to ensure the life of your wall structure.

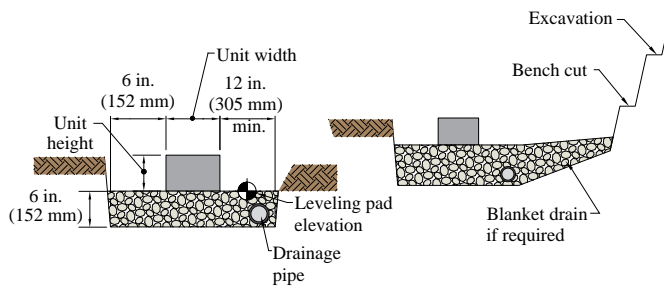


### 1. SITE PREPARATION AND EXCAVATION

Excavate a trench a minimum of 6” beyond the front and back of the wall block. Dig trench 9” to 14” deep, enough to create a 6” thick leveling pad and to bury at least one whole wall block below grade. Compact the soil at the bottom of trench. Shape the slope behind wall to allow for 12” of drainage material.

### 2. INSTALL LEVELING PAD

Place filter fabric in trench and up the cut slope. Fill trench with clean, graded aggregate and compact.



### 3. PLACE BASE COURSE (FIRST ROW)

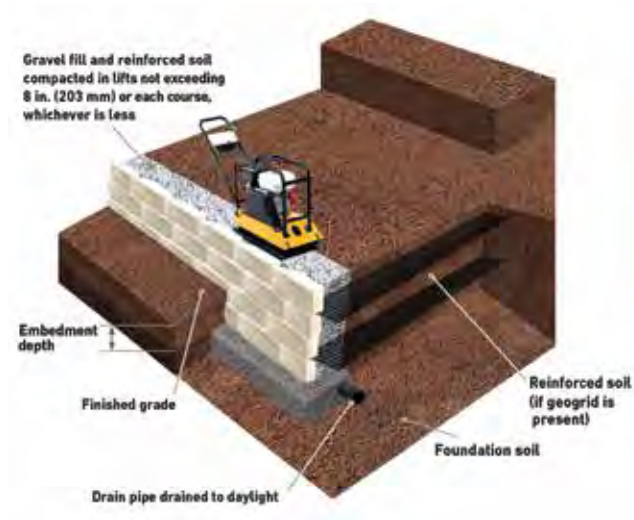
Position a level string line at the straight face of the unit to maintain alignment. Place the wall units side by side in the center of the prepared base. Bury the first course of block below grade to a depth equal to 10% of the height of the wall or a minimum of 6”, whichever is greater. Level units from side to side, and front to back.

### 4. DRAINAGE SET-UP

Fill the space in front of wall with clean fill to grade to hold units from shifting. Place a perforated pipe behind wall on top of base for drainage. Fill any block cores and the drainage area with clean aggregate keeping filter fabric in place. Backfill soil on outer side of fabric and compact.

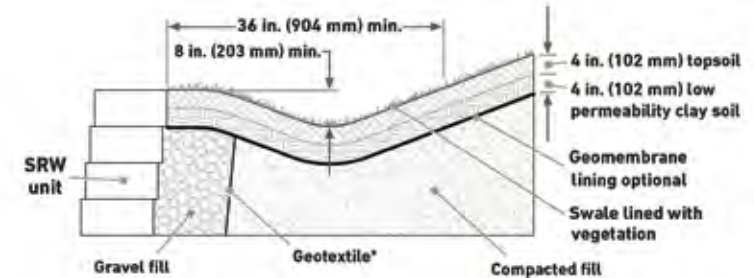
### 5. STACKING UNITS

Place successive courses by fitting the keys and grooves onto the units in the row below (if applicable). Keep the tops of each course clean to maintain a level surface. Stack units one layer at a time in a running bond pattern (crossing joints). Utilize geogrid when the wall height is 3 ft. or more or as required by the project engineer or approved design drawings.



### 6. PLACE GRAVEL AND BACKFILL MATERIALS

Continue building the wall to the desired height. Backfill with clean aggregate behind each course as completed. Backfill and compact soil. Finish the wall by securing the wall cap with a suitable masonry adhesive.



\*Geotextile may be necessary when the infill soil includes fine-grained sand that have the potential to infiltrate the gravel fill

**Note:** Illustrations shown are not for construction purpose. Please confer with your local engineer for proper placement of geogrid.

**Important:** Walls higher than 36” above grade, terraced walls, weak soils, and other loading conditions require special considerations in design and construction. This should be done by a qualified engineer & a professional contractor. Check with your local building department for code requirements.



5" Colonial Wall | Color: Oyster Blend



Firma Wall | Color: Crab Orchard Blend

# THE NICOLOCK WALL COLLECTION



Kodah Wall | Color: York Brown

## New York

### Corporate Headquarters

612 Muncy Avenue • Lindenhurst, NY 11757  
P: 631.669.0700 • F: 631.669.0711

### Nicostone by Nicolock

200 Henry Street • Lindenhurst, NY 11757  
P: 631.669.0600 • F: 631.669.8052

## Albany

One Mustang Drive • Cohoes, NY 12047  
P: 518.888.2731 • F: 518.252.4937

## New Jersey

482 Houses Corner Road • Sparta, NJ 07871  
P: 551.232.6443 • F: 973.425.5188

## Pennsylvania

85 Ben Fairless Drive • Morrisville, PA, 19067  
P: 201.932.4500 • F: 732.960.9950

## New England

99 Stoddard Avenue • North Haven, CT 06473  
P: 203.234.2800 • F: 203.985.0381

## Massachusetts

241 Francis Avenue • Mansfield, MA 02048  
P: 508.298.2243 • F: 508.590.7678

## Maryland

8400 Progress Court • Frederick, MD 21701  
P: 301.620.0100 • F: 301.620.0007

## Delaware

1000 South Market Street • Wilmington, DE 19801  
P: 302.981.0986 • F: 302.691.4500

## Virginia

9124 Barricade Lane • Mechanicsville, VA 23116  
P: 571.332.3513 • F: 571.406.1251

## Other Nicolock Catalogs:



Nicolock Full Product Catalog



Design Guide by Nicolock



Nicolock Outdoor Living