

ROMEX® PFM GmbH · Von-Bassenheim-Str. 2 · 53881 Euskirchen

Stone Event Imports LTD.
Graeme Hodson-Walker
Tom Kirk
260 Riverside Drive
CA-V7H 2M2 North Vancouver, BC

ROMEX® PFM GmbH
Von-Bassenheim-Str. 2
53881 Euskirchen

Tel. +49 2251 9412-20
Fax +49 2251 9412-28
E-Mail: info@romex-mb.de
Internet: www.romex-mb.de

Euskirchen, den 15.08.2016
bm

Canada Place Renewal with ROMEX grout - items for the next round -

Dear Graeme, dear Tom,

thanks for your eMail from Friday, 12th of August, about the Canada Place Renewal with ROMEX® grout. I like to answer the questions a followed:

ROMEX® has a over 25 year experience with world-wide grouting projects. Also in North America we done some mayor projects in the last 10 years, with many happy customers, who are all willing to answer questions when contacted. Please feel free to contact each of the following ROMEX-customers and partners:

1. Reviews + References

- a. More than ROMEX marketing brochures/booklets, they want to see letters from:
 - i. Trades people who have used it
 - ii. Installers
 - iii. Any public works directors
 - iv. Architects

Reference:

Las Vegas Boulevard

90.000 sqft of mosaic paved stone jointing at Las Vegas Boulevard

Melk landscape architecture PC

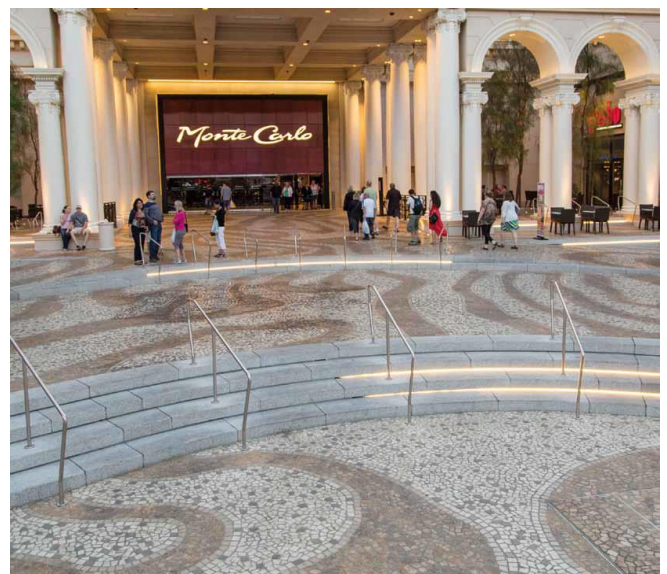
Jerry van Eyck (212) 513 1025

MGM Resorts International

Kevin Graves: (702) 273 6589

Shaw - Lundquist Associates Inc

Michael Zafarano III (702) 968 7865



FEDERAL BUILDING SERVICES
 Mike Kerro (702) 860 3972

SUPERIOR TILE & STONE
 Tommy A. Conner (510) 895-2700

UNILOCK Inc.
 Michael Zengen (845) 278 6700

Reference:
The Barclays Center in Brooklyn, New York
 38.000 sqft of concrete stone paving

Forest City Ratner Companies
 Robert P. Sanna (718) 923 8414

UNILOCK Inc.
 Michael Zengen (845) 278 6700



Reference:
The Public Square in Downtown Cleveland, Ohio
 40.000 sqft of chinese granit cobblestones

James Corner Field Operations
 Isabel Castilla (212)-433-1450

Cleveland Marble Mosaic Company
 Edward W. Drobnick (216) 749 2840



Reference:
16th Street Mall in Downtown Denver, Colorado
 Joint repair of former cement joints since 2011

Telluride Stone Company
 Heidi Tonare (303) 38 88 863



Reference:

Tavern on the Green; Central Park, NYC

3.000 sqft of chinese granit cobblestones

Owner

David Salama (646) 378 2631

UNILOCK Inc.

Michael Zengen (845) 278 6700



Reference:

Grand Army Plaza, 5th Ave, NYC

4.000 sqft of chinese granit cobblestones

Central Park Conservancy

Christopher J. Nolan, ASLA (212) 310 6600

UNILOCK Inc.

Michael Zengen (845) 278 6700



Reference:

The High Line, Manhattan, NYC

Gravelbinding

James Corner Field Operations

Isabel Castilla (212) 433 1450

Sciame Construction, LCC;

Michael McVicker (212) 232 2200



Reference:

Bryant Park, Manhattan, NYC

20.000 sqft of natural stone slabs

Bryant Park Corporation

Craig M. LaCaruba, RLA (917) 438-5132

UNILOCK Inc.

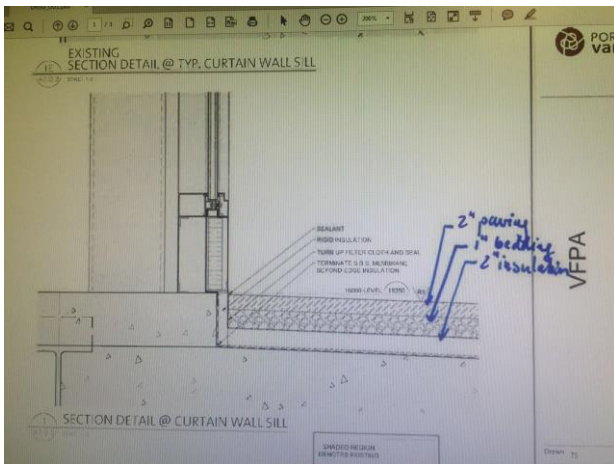
Michael Zengen (845) 278 6700



Many more to be named by ROMEX USA for sure.

2. Examples of using the 4:1 or 5:1 sand:mortar mix as a bedding mix – senior guy asks, “I don’t understand why you would encourage water to go into mortar that is under your paving?”

From our point of view it is still the best way to prevent the paving from damage, when also the bedding is bond. But of course, now knowing the whole construction, a water permeable bedding would not make too much sense, that is true, since the “isolation” under the pavement is “waterproof”.



A bedding made out of

Recommended mixing ratio:

1 volume part TRASS® BED COMPOUND

4 volume parts filler material (i.e. rolled grit/gravel) 4-8 mm | ½" - ⅝"

will surely do the same job in terms of frost-resistant than a lose grit-bedding.

By suggesting to use a little finer sand and only 40 lbs to one set of ROMPOX-D1, we creat a less permeable grout, but still we will have to

care about the water that goes into the bedding, onto the isolation. A drainage would be suggested, although our test reports state, that also with “standing-water” below the paving, inside the bedding, nothing will happen to the joint. Not with heat, not with frost.

See attached Test-Report.



Frost resistant drainage mortar

Drainage trass bed mortar



3. Safety procedures / SOPs / best practices from Swedish port (dock?) and any other job to ENSURE NO BPA goes into the water system. This is critical to present.

We need to make sure, that during the work the resin will not get into the water, e.g. by taping of the last stones to the water with high-quality tape in form of a “water-barrier” and maybe also have a water-vacuum cleaner on the site, to suck up some of the water/resin:



4. Compatibility with (will NOT degrade in any way):

- a. “Hydrotech” water proofing
- b. Polyethelene barrier
- c. Extruded polystyrene insulation/voiding

From our knowledge, all this above methods would do the job. I assume the cheapest is the “Hydrotech” water proofing, that is mostly used on flat roofs. I know that has been also used a lot under paving-areas, e.g. on top of a underground parking garage.

5. Mock up – TBD

Sure. Wolfgang offered to visit you guys in about 3 weeks time. You are in contact with him constantly. I will be back in North-America later Otober, visiting the <https://www.asla.org/annualmeetingandexpo.aspx>

6. Cost Estimates – TBD

When all the details (stone and joint dimensions) are clean, we can calculate!

I also added the "guarantee" issues below:

THE ROMEX® RESIN FILM GUARANTEE

For almost 25 years now, ROMEX® has been giving customers the following **GUARANTEE FOR ALL THEIR PRODUCTS** (1 or 2-COMPONENT):

EVERY resin film, regardless of product or intensity, will

DISAPPEAR COMPLETELY

over time, due to weathering and degree of usage of the paved stone surface!

The end result will be a natural looking stone surface, the way it looked **BEFORE** jointing was done.

GUARANTEED!

Many Greetings from Euskirchen / GERMANY

yours
Bert Meurer
(General Manager)



Some facts about synthetic resin film:

- Jointing leads to a natural intensifying of the stone color, sometimes a gloss effect (wet look)
 - The synthetic resin film acts as a high quality stone surface sealant, that protects the paving stone from dirt
 - For light/white colored types of stone (e.g. split- or hammered granite) the film can lead to stronger visual color intensifying. This is absolutely normal.
 - A resin film does not constitute an "application fault" and the quality of the surface is not compromised in any way.
 - The disappearance of the synthetic resin film can take varying times. Surfaces that are level and that generally have heavier loads and stronger weathering effects, will lose the synthetic resin film quicker than on edges, that generally lie lower and are not affected so much by loads or weathering.
 - For the jointing of large format slabs, the synthetic resin paving jointing mortar is spread over the whole surface. This is to ensure an even synthetic resin surface appearance after the jointing is finished.
- This aspect of synthetic resin jointing of paved stones should be discussed with the client in detail before jointing is carried out. Please contact us for more information!
- We also do samples and mock-up's for your convenience!

Cleaning and maintenance

To keep things looking attractive, they need to be cared for!

Cleaning and maintenance after jointing:

Single grains of sand on the stone surface will disappear over time and due to weathering. It is recommended using algae and moss removers, impregnators and colour enhancers, which are available from DIY/building material stores. These will not damage the ROMEX® products!

With red/brown types of stone and porphyry paving stones, there is a possibility that the stone surface becomes grey/white during the initial phase. This discolouration will disappear within a few months. This is due to light refractions within the synthetic resin film as it breaks up.

In order to minimise this apparent discolouration, it is recommended using a colour enhancer, which will restore the colour intensity achieved by the synthetic resin film. Alternatively, you can use an agent for removing resin film/marks.

Joints that have been jointed using high pressure cleaner resistant ROMEX® pavement fixing mortar, can be regularly cleaned, in order to ensure permanent water permeability – but be aware that the joints should not be cleaned using machines with more than 130 bar (<2000 PSI). Also ensure that there is a minimum distance of 20-30 cm between the joint and cleaner. When use heated water or steam, the temperature of the water should be below the boiling-point, up to max 90°C/200°F.

At this point, we would like to state that some manufacturers of natural and in particular concrete stones, advise against cleaning using high pressure cleaners, so that the structure and colour of the stone is not negatively affected.

Cleaning of tools and disposal of packaging and mortar remains

Tools should be cleaned immediately after use with water. Hardened pavement fixing mortar remains can be cleaned using the special cleaning agent ROMPOX® - POWERclean.

Letter of guarantee ROMPOX®-Resins

Dear Ladies and Gentleman,

many thanks that you are consideration to use / have chosen to use the ROMEX® products.

ROMEX® guarantees a quality warranty for the ROMPOX®- Resins of

minimum of **5 years**

for technical data and characteristics as well as the product data of the resin itself, that it will hold up, as the sample areas.

Conditions for this are the exact application of the product according to ROMEX® application instructions and the construction site induction carried out by ROMEX technical engineer locally. Not included is the labor.

In case of a resin failure, ROMEX will provide all necessary product to rebuild the failed areas.

With kind regards



I hope to have informed you the best way I could today. I am sure Steffi and Wolfgang will also have many more details on this above issues.

Hope to hear from you soon and many greetings from Euskirchen

Yours
Bert

