

Outdoor Living Collection

NICOLock
PAVING STONES • RETAINING WALLS • OUTDOOR LIVING
 paver-shield™



**GRILLS
APPLIANCES
SEGMENTAL KITCHEN SYSTEMS
BURNERS
FIRE PITS
OUTDOOR HEATERS
ACCESSORIES
AND MUCH MORE**

SUNFIRE | AMERICAN MADE GRILLS



SUNFIRE GRILLS



32" SunFire Built-In Grill



38" SunFire Built-In Grill



32" SunFire Freestanding Grill



38" SunFire Freestanding Grill



Single Side Burner



Double Side Burner



Power Burner

Visit sunfiregrills.com to view the full product line

AMERICAN MADE GRILLS

ENCORE



36" Encore Hybrid Grill
ENC36



54" Encore Hybrid Grill
ENC54



36" Freestanding Encore Hybrid Grill
ENCFS36



Encore Power Burner
ENCPB2

MUSCLE



36" Muscle Hybrid Grill
MUS36



54" Muscle Hybrid Grill
MUS54



54" Freestanding Muscle Hybrid Grill
MUSFS54



Muscle Power Burner
MUSPB2

ESTATE



36" Estate Gas Grill
EST36



42" Estate Gas Grill
EST42



42" Freestanding Estate Gas Grill
ESTFS42



Estate Double Side Burner
ESTSB2

ATLAS



36" Atlas Gas Grill
ATS36



36" Freestanding Atlas Gas Grill
ATFS36

Visit americanmadegrills.com to view the full product line

SUMMERSET GRILLS



SUMMERSET

Built-in & Freestanding
Grills available.
See accessories on next page.

SIZZLER



32" Sizzler Built-In Grill
SIZ32



40" Sizzler Built-In Grill
SIZ40



32" Sizzler Freestanding Grill
CART-SIZ32-DC + SIZPRO32



40" Sizzler Freestanding Grill
CART-SIZ40 + SIZ40



Sizzler Double Side Burner
SIZSB2

SIZZLER PRO



32" Sizzler Pro Built-In Grill
SIZPRO32



40" Sizzler Pro Built-In Grill
SIZPRO40



32" Sizzler Pro Freestanding Grill
CART-SIZ32-DC + SIZPRO32



40" Sizzler Pro Freestanding Grill
CART-SIZ40 + SIZ40



Sizzler Pro Double Side Burner
SIZPROSB2

TRL



38" TRL Built-In Grill
TRL38



44" TRLD Built-In Grill
TRLD44



38" TRL Freestanding Grill
CART-TRL38 + TRL38



TRL Power Burner
TRLPB2



TRL Double Side Burner
TRLSB2

ALTURI



36" Alturi Built-In Grill
ALT36T



42" Alturi Built-In Grill
ALT42T



36" Alturi Freestanding Grill
CART-ALT36 + ALT36T



Alturi Sear Side Burner
ALTSS



Alturi Power Burner
ALTPB2

Visit summersetgrills.com to view the full product line

STAINLESS ACCESSORIES



SUMMERSET

SUN FIRE
GRILLS

DOORS & DRAWERS



27x20 Horizontal Access Drawer
SSDH-27



33" 3-Drawer & Access Door Combo
Drawer-SSD3-33



17" Triple Drawer
SSDR3-17



30" 3-Drawer & Access Door Combo
SSDC2-30



20" Trash Pullout Drawer w/ 10
Gallon Trash Bin SSTD1-20



20" Vented Liquid Propane Tank or
Trash Drawer SSDR1-20LP



17" Paper Towel Holder
SSTH-17



26" Utensil Drawer
SSDR1-26U



33" Double Access Door
SSDD-33

LIGHTED REFRIGERATION



24" Deluxe Outdoor Rated
Refrigerator SSRFR-24D



15" Outdoor Rated Refrigerator
w/ Glass Door SSRFR-15SG



21" Compact Refrigerator
SSRFR-21S



15" Outdoor Rated Refrigerator
SSRFR-15S



24" Deluxe Outdoor Rated 2-Drawer
Refrigerator SSRFR-24DR2

BARS | SINKS | COOLERS



30" Lighted Beverage & Prep Station
SSBC-30L



19" Undermount Sink
SSNK-19U



15" Drop-In Sink with Hot/Cold Faucet
SSNK-15D



17" Drop-In Cooler
SSIC-17



28" Drop-In Cooler
SSIC-28

Visit summersetgrills.com or americanmadegrills.com to view the full product line

SEGMENTAL KITCHEN SYSTEMS

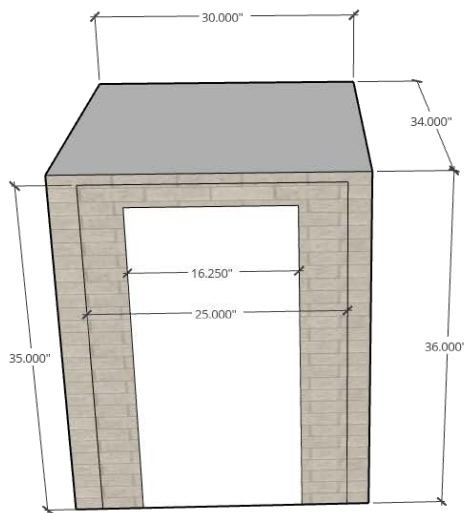
Create your customized outdoor dining area the way you envision it. Use Segmental Kitchen Systems to create grill islands, kitchens, bar spaces and much more. Options are endless when you choose from a variety of cabinet options and stainless appliances.



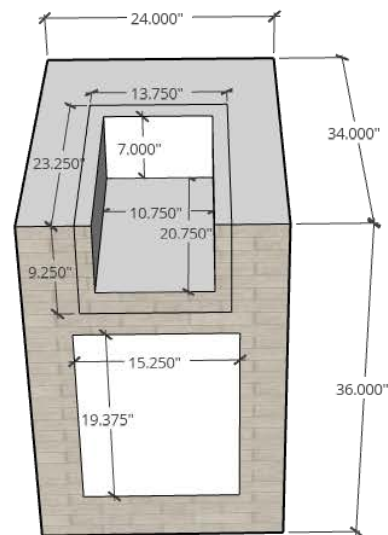
ADDITIONAL CABINETS:

- 3 Drawer Cabinet
- Cold Storage Cabinet
- 48" Grill Cabinet
- 54" Grill Cabinet
- 48" Door/Drawer Cabinet
- End Panel Cabinet
- 6" Filler Cabinet
- 12" Filler Cabinet
- Side Burner Cabinet
- Power Burner Cabinet
- Sink Cabinet
- Trash Drawer/LP Cabinet
- Universal Corner Cabinet

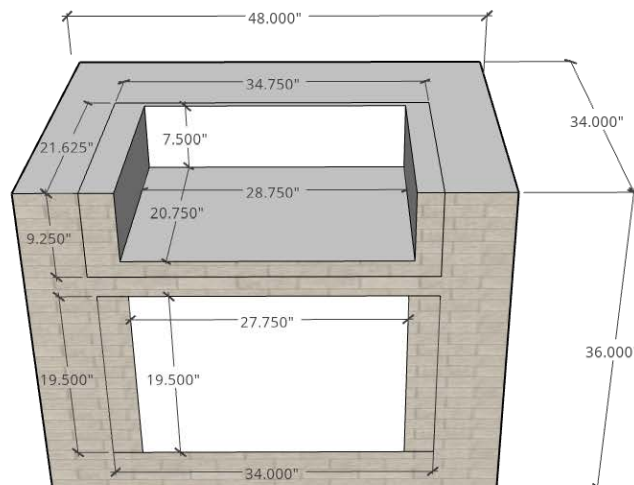
COLD STORAGE CABINET



SIDE BURNER CABINET



48" GRILL CABINET



FIREGEAR



FIREGEAR

BURNERS

MATCH THROW



AVAILABLE IN ROUND AND SQUARE

BRASS AWS & MT



LAVA ROCK



Mined from the earth, these dark rocks contrast beautifully against a bright flame. Each rock is approximately 1" to 2" in diameter. 10lb bag / 50lb bag

TMSI/TPSI SPARK IGNITION



AVAILABLE IN ROUND AND SQUARE

H-BURNER



LAVA STONE



Made from tumbled lava rock, these stones lend a casual elegance. Each stone is approximately 1" to 2" in diameter 40lb bag

TFS W/ REMOTE



AVAILABLE IN ROUND AND SQUARE

T-BURNER



SPIT FIRE



GLASS

REFLECTIVE	Mirror finish broken reflective. Approx. 1/2" to 3/4" in size	5lb bag
BROKEN	Large broken. Approx. 1/2" to 3/4" in size	5lb bag

LARGE REFLECTIVE GLASS COLORS



Bronze

Cobalt

Copper

Ebony

Silver

BROKEN GLASS COLORS



Caribbean

Cola

Crystal

Pepper

Seabreeze

SEDONA



IRONWOOD STEEL



Visit firegearoutdoors.com to view the full product line

LUME



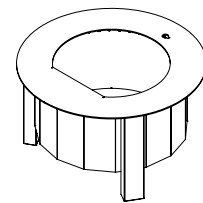
LUME SMOKE-LESS FIRE PIT

- Unique Design for Less Smoke
- Larger Surface, More Cooking
- Lightweight, Easy to Transport
- Free Standing or Built-In
- Modular, Removable Legs
- Low Maintenance

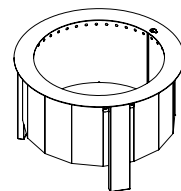


LUME-MSG

Purchase the Grill Post and cover separately to maximize your Smoke-less cooking potential!



MULTISIDED WITH SEAR TOP



MULTISIDED

	NON-SEAR	NON-SEAR	SEAR	SEAR
	LUME-MS1	LUME-MS2	LUME-MS1SR	LUME-MS2SR
Dimensions				
Rim Outer Diameter (A)	26"	31"	29"	34"
Rim Inner Diameter (B)	20"	25"	18"	20"
Height (C)	16 ³ / ₈ "	16 ³ / ₈ "	16 ¹ / ₁₆ "	16 ⁷ / ₁₆ "
Base Outer Diameter (D)	25 ¹ / ₄ "	30 ¹ / ₄ "	27 ³ / ₈ "	32 ³ / ₈ "
Dimension (E)	23 ³ / ₁₆ "	28 ³ / ₁₆ "	24 ⁷ / ₈ "	29 ¹ / ₈ "
Dimension (F)	N/A	N/A	16 ¹ / ₈ "	18 ¹ / ₈ "
Outer Liner (G)	23 ⁵ / ₁₆ "	28 ⁵ / ₁₆ "	23 ⁵ / ₁₆ "	28 ⁵ / ₁₆ "
Weight	44.14 lbs.	55.46 lbs.	62.25 lbs.	82.18 lbs.
Fits Openings	23 ¹ / ₂ "-25 ¹ / ₄ "	28 ¹ / ₂ "-30 ¹ / ₄ "	23 ¹ / ₂ "-27 ¹ / ₂ "	28 ¹ / ₂ "-32 ¹ / ₂ "

SANCTUARY SERIES

SANCTUARY 1



FEATURES

- Ignition Systems: AWS or TMSI/TPSI
- Dimensions: 56" W x 16" H x 38" D
- Colors: Arctic, Cream, Mocha, Chocolate, Slate, Raven
- Outdoor GFRC Fire Table (430 lbs. - Table Only)
- Choose between Natural Gas (NG) and Propane (LP)
- Liquid Propane (LP) conversion kits sold separately
- Natural Gas: 65,000 Btu's
- Includes weather cover

SANCTUARY 2



FEATURES

- Ignition Systems: MT, TMSI/TPSI or AWS
- Dimensions: 39" Diameter x 18" H
- Colors: Arctic, Cream, Mocha, Chocolate, Slate, Raven
- Outdoor GFRC Fire Bowl (222 lbs. - Bowl Only)
- AWS & MT ship as Natural Gas (NG) or Propane (LP)
- TMSI ships as Natural Gas (NG)
- Liquid Propane (LP) conversion kits sold separately
- Natural Gas: 65,000 Btu's (MT units: 75,000 Btu's)
- Includes weather cover

SANCTUARY 3

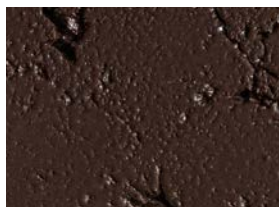


FEATURES

- Ignition Systems: MT, TMSI/TPSI or AWS
- Dimensions: 30" Diameter x 14 1/4" H
- Colors: Arctic, Cream, Mocha, Chocolate, Slate, Raven
- Outdoor GFRC Fire Bowl (112 lbs. - Bowl Only)
- AWS & MT ship as Natural Gas (NG) or Propane (LP)
- TMSI ships as Natural Gas (NG)
- Liquid Propane (LP) conversion kits sold separately
- Natural Gas: 65,000 Btu's (MT units: 75,000 Btu's)
- Includes weather cover



ARCTIC



CHOCOLATE

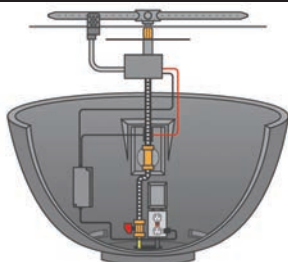


RAVEN

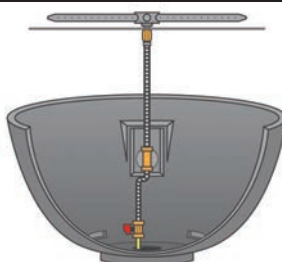


SLATE

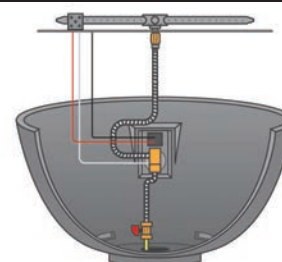
AWS IGNITION



MT IGNITION



TMSI/TPSI IGNITION



KALEA BAY FIREPLACE



SINGLE SIDED KALEA BAY INCLUDES:
 1- 42" high x 84" wide with cut out
 1- 42" high x 84" wide panel (no cut out)
 2- 42" high x 17" wide side panel
 4- 42" high structural corner units, smooth
 1- Cast Stone top (24½" x 91½")
 1- 48" Kalea Bay Fireplace insert with black crushed glass

DOUBLED SIDED KALEA BAY INCLUDES:
 2- 42" high x 84" wide with cut-out
 2- 42" high x 17" wide side panel
 4- 42" high structural corner units, smooth
 1- counter top (24½" x 91½")
 1- 48" Kalea Bay Fireplace insert with black crushed glass

Non LED

Non LED
 *Must order see through conversion

*Please order gas specific LP/NG

	LENGTH	WIDTH	HEIGHT	LBS/PALLET
WITHOUT TOP	87"	19½"	42"	750
WITH TOP	91½"	24½"	43½"	

CHOOSE YOUR COLOR:



BISCOTTI TAN

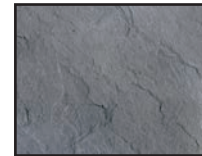


MOUNTAIN SLATE



NY BLUESTONE

CHOOSE YOUR TOP:



BLUESTONE



BROWN

*Only offered in Ledge Stone texture

NANTUCKET KITCHEN ISLAND



PACKAGE A (PICTURED) INCLUDES:

- 1 Back panel
- 1 Front panel
- 4 Corners
- 2 End panels (sides)
- Top
- Drop cloth/sheet protector
- 32" Sizzler Pro Grill • cutout dimensions: 30¾" (W) x 8½" (H) x 20¾" (D)
- 30" Double Access Door • cutout dimensions: 30¼" (W) x 19¼" (H) x n/a (D)
- 1 Strap
- 1 Bag of PMG-2
- 2 Tubes of adhesive

PACKAGE B INCLUDES:

- 2 Horizontal panels
- 4 Corners
- 2 End panels (sides)
- Top
- Drop cloth/sheet protector
- 1 Strap
- 1 Bag of PMG-2
- 2 Tubes of adhesive



*Please order gas specific LP/NG

WITHOUT TOP	35" x 84" x 41"
WITH TOP	36½" x 86" Horizontal
LBS/PALLET	1,000

CHOOSE YOUR TEXTURE:



BARN WOOD*

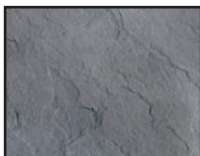


LEDGE STONE



STACKED STONE

CHOOSE YOUR TOP:



BLUESTONE



BROWN

CHOOSE YOUR COLOR:



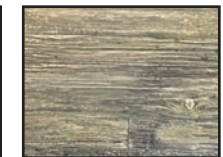
BISCOTTI TAN



MOUNTAIN SLATE



NY BLUESTONE



WEATHERED WOOD

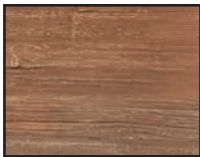
*Barn Wood texture available in Rustic Brown (color shown in texture swatch) and Weathered Wood colors. Stone textures available in Biscotti Tan, Mountain Slate and NY Bluestone colors.

OVATION FIRE PIT



	BASE	TOP	HEIGHT	LBS/PALLET
WITHOUT TOP	40" DIAMETER	44" DIAMETER	18"	345
WITH TOP			19½"	

CHOOSE YOUR TEXTURE:



BARN WOOD*



LEDGE STONE



STACKED STONE

CHOOSE YOUR TOP:



BLUESTONE



BROWN

CHOOSE YOUR COLOR:



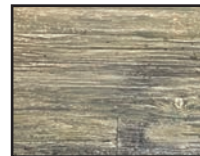
BISCOTTI TAN



MOUNTAIN SLATE



NY BLUESTONE



WEATHERED WOOD

*Barn Wood texture available in Rustic Brown (color shown in texture swatch) and Weathered Wood colors. Stone textures available in Biscotti Tan, Mountain Slate and NY Bluestone colors.

CHOOSE YOUR WOOD OR GAS PACKAGE:

WOOD	2 Panels and Connectors	Stone-Face Top	Round/Square Insert	Smoke-less Metal Insert	Smoke-less Stainless Steel Insert
Wood Standard 1					
SMOKE-LESS					
Smoke-Less 1					
Smoke-Less 2					

GAS	2 Panels and Connectors	Stone-Face Top	Lava Rocks ² (min qty)	Match Throw Burner Kit	TMSI/TPSI Burner Spark Ignition Kit	TFS Burner Kit w/ remote
*Deluxe Match Throw ¹						
*Deluxe Spark TMSI ¹						
Deluxe Remote TFS**						

Vent kit included with all ignition systems. Control panel included. **Brass options available.**

*Control panel included | ¹Includes NG to LP Piece

²Lava Rock supplied is minimum quantity needed. Must add additional or glass for finish

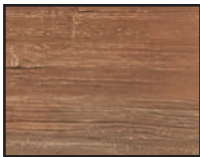
****Must be ordered with natural gas or liquid propane**

ENCORE FIRE PIT



	BASE	TOP	HEIGHT	LBS/PALLET
WITHOUT TOP			18"	
WITH TOP	40" x 40"	44" x 44"	19½"	400

CHOOSE YOUR TEXTURE:



BARN WOOD*

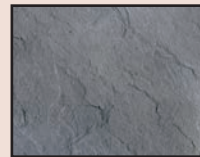


LEDGE STONE



STACKED STONE

CHOOSE YOUR TOP:



BLUESTONE



BROWN

CHOOSE YOUR COLOR:



BISCOTTI TAN



MOUNTAIN SLATE



NY BLUESTONE



WEATHERED WOOD

*Barn Wood texture available in Rustic Brown (color shown in texture swatch) and Weathered Wood colors. Stone textures available in Biscotti Tan, Mountain Slate and NY Bluestone colors.

CHOOSE YOUR WOOD OR GAS PACKAGE:

WOOD	4 Panels and Connectors	Stone-Face Top	Round/Square Insert	Smoke-less Metal Insert	Smoke-less Stainless Steel Insert
Wood Standard 1					
SMOKE-LESS					
Smoke-Less 1					
Smoke-Less 2					

GAS	4 Panels and Connectors	Stone-Face Top	Lava Rocks ² (min qty)	Match Throw Burner Kit	TMSI/TPSI Burner Spark Ignition Kit	TFS Burner Kit w/ remote
*Deluxe Match Throw ¹						
*Deluxe Spark TMSI ¹						
Deluxe Remote TFS**						

Vent kit included with all ignition systems. Control panel included. Brass options available.

*Control panel included | ¹Includes NG to LP Piece

²Lava Rock supplied is minimum quantity needed. Must add additional or glass for finish

**Must be ordered with natural gas or liquid propane

TRIUMPH FIRE PIT



LENGTH	WIDTH	HEIGHT	TOP HEIGHT	LBS/PALLET
62½"	40"	24"	1¼"	750

CHOOSE YOUR TEXTURE:



BRICKFACE



STACKED STONE

CHOOSE YOUR COLOR:



BISCOTTI TAN



HARBOR GRAY*



NY BLUESTONE*

*Harbor Gray not available in Stacked Stone.
NY Bluestone not available in Brickface.

INCLUDES:

- 4 GFRC Wall Panels
- 4 GFRC Corner Pieces
- 44" x 66" Granite Top
- 1 NPS 14" x 20" Access Door w/ Vents
- 1 Paver Vent 4LNTS
- 1 LOF-BO-LP40 (Conversion Kit)
- 1 FG-32LPHRK Propane Regulator & Hose
- 1 LOF-36LHTMSI-N (12" x 36" linear burner)
- Lava Rocks

GRANITE TOP



Caledonia

SPARK SCREENS

781 BLACK



775 BLACK



775 STAINLESS STEEL



770 BLACK



MODEL

DIMENSIONS

781 Black

39" Diameter 18" High-Steel (Round)

775 Black

30" Diameter 15" High (Round)

775 Stainless Steel

30" Diameter 15" High Stainless Steel (Round)

770 Black

30" Diameter 12" High Steel (Square)

WOOD FIRED PIZZA OVENS



IMPERIAL

304 stainless steel
Black top
Refractory brick floor
Removable door with wood handles
Outside oven: 33½" x 38¼"
Inside oven: 29½" x 32½"
Thermostat
Opening: 17⅝"
Fits a 16" Pizza



DUKE

304 stainless steel
Black top
Refractory brick floor
Removable door with wood handles
Outside oven: 21" x 30¾"
Inside oven: 18" x 27¼"
Opening: 15"
Fits a 12" personal pizza



All-Weather
Cover

INCLUDED ACCESSORIES:



Pizza
Peel

Cleaning
Brush

NEW! OUTDOOR HEATERS

Dimplex DLW Series Outdoor/Indoor Radiant Heater, White

DLW3200W24



- Effective radiant heat that warms like the sun, heating people and objects with zero glare
- Silent, maintenance free operation
- IP 55 rated, weather-proof construction allows year-round enjoyment
- Designed for permanent hardwired installations on a dedicated 240V circuit

Dimplex DLW Series Outdoor/Indoor Radiant Heater, Black

DLW2400B24



- Effective radiant heat that warms like the sun, heating people and objects with zero glare
- Silent, maintenance free operation
- IP 55 rated, weather-proof construction allows year-round enjoyment
- Designed for permanent hardwired installations on a dedicated 240V circuit

Dimplex Outdoor Portable Infrared Propane Heater, 31,500 BTU

DGR32PLP



- Powerful, stylish and portable heat for outdoor areas
- Heat on demand - when and where you need it
- Durable stainless steel construction
- Advanced safety features including world class wind protection up to 9.9 Mph/16 km/hr.

Dimplex Outdoor Wall-mounted Natural Gas Infrared Heater, 31,500 BTU

DGR32WNG



- Powerful, stylish and space-saving heat for outdoor areas
- Heat on demand - when and where you need it
- Durable stainless steel construction
- Advanced safety features including world class wind protection up to 9.9 Mph/ 6 Kph

Dimplex Indoor/Outdoor Electric Infrared Heater, 240V 2000W

DSH20W



- IP65 rating for indoor and outdoor applications
- 1, 2 and 3 hour delay timer
- 8 hour auto shutoff safety mechanism
- 3 second maximum heat up time

Dimplex DIRP Outdoor/Indoor Infrared Heater, Plug-in Model, 120V, 1500W

DIRP15A10GR



- Nextrema® Schott glass ensures even heat distribution and minimizes light emissions
- Corrosion resistant anodized aluminum and 304 stainless steel makes this product suitable for all climates
- Three temperature settings - 600W (low), 1050W (med), 1500W (high) for maximum comfort
- Produces full heat in as little as 6 second maximum

Dimplex Outdoor/Indoor Electric Infrared Heater

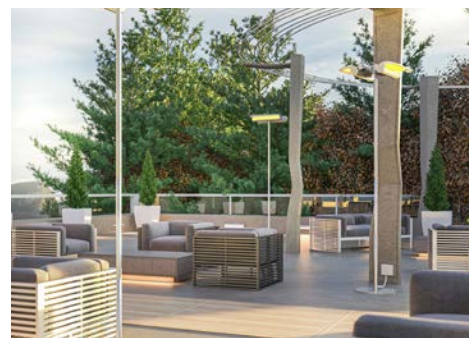
DIR15A10GR



- Schott Nextrema® glass combines high-temperature, thermal shock and chemical resistance, excellent infrared transmission, non-porous surface and attractive design
- Instant Heat: Ruby halogen bulb provides full power in under 8 seconds
- Waterproof: IP65 rated for outdoor or indoor use
- Corrosion Resistant: Anodized aluminum casing provides long life and suitable for all climates

Dimplex Indoor/Outdoor Electric Infrared Heater, Permanent Location Floor Stand

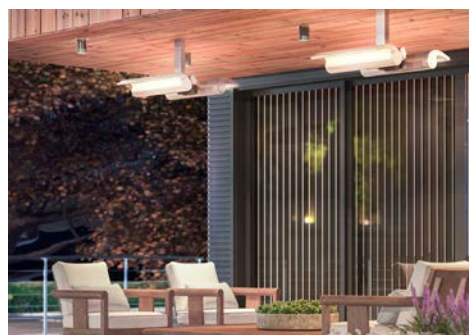
DSHSTAND



- Ability to tilt heater(s) for optimal heat exposure
- Corrosion resistant anodized aluminum and 304 stainless steel makes this product suitable for all climates
- All hardware included
- Quick and easy installation

DSH Series Ceiling Mount Bracket Kit

DSHCMB



- Ability to tilt heater(s) for optimal heat exposure
- Positions the unit(s) between 1 and 2 feet from the ceiling (2 inch adjustment increments)
- Corrosion resistant anodized aluminum and 304 stainless steel makes this product suitable for all climates
- All hardware included

PERGOLAS



- Constructed of vinyl
- Easy maintenance
- Customizable
- Lifetime warranty
- Two stock sizes: 13'x16' or 15'x15'

CUSTOM SIZES AVAILABLE

VISIT OUR NEW OUTDOOR LIVING SHOWROOM

9 Aaron Way • Sparta, NJ 07871

New York

Corporate Headquarters

612 Muncy Avenue • Lindenhurst, NY 11757
P: 631.669.0700 • F: 631.669.0711

Nicostone by Nicolock

200 Henry Street • Lindenhurst, NY 11757
P: 631.669.0600 • F: 631.669.8052

Albany

801 Watervliet Shaker Road • Latham, NY 12110
P: 518.888.2731 • F: 518.252.4937

New Jersey

482 Houses Corner Rd • Sparta, NJ 07871
P: 551.232.6443 • F: 973.425.5188

New Jersey Design Center

620 Cedar Swamp Road • Jackson, NJ 08527
P: 201.932.4500 • F: 732.960.9950

New England

99 Stoddard Avenue • North Haven, CT 06473
P: 203.234.2800 • F: 203.985.0381

Massachusetts

241 Francis Avenue • Mansfield, MA 02048
P: 508.298.2243 • F: 508.590.7678

Maryland

8400 Progress Court • Frederick, MD 21701
P: 301.620.0100 • F: 301.620.0007

Delaware

1000 South Market Street • Wilmington, DE 19801
P: 302.981.0986 • F: 302.691.4500

Virginia

9135 Barricade Lane • Mechanicsville, VA 23116
P: 571.332.3513 • F: 571.406.1251