



The Product Directory

The **best outdoor lighting solution** for North American professionals.

A NOTE FROM
Our Founder & CEO

“ At BOLD, we take challenges head-on. We welcome adversity with open arms and turn it into the spark that ignites our drive to succeed. Where some see the impossible, we see opportunity. Whether it’s about providing next-level customer service, or thinking outside the box to discover innovative solutions, we are relentless in our pursuit of excellence. We are dedicated to working closely with professionals in our industry and are committed to utilizing their input as inspiration to create a product line that directly addresses the needs of the North American market. ”



RAMON PIETERS

The future is **BOLD**.



STRONG. SMART. FAST.

Cobra Connector

The Cobra Connector is a patent pending connection system designed to make your lighting installations more efficient and secure than ever before. It is made with an improved clamp technology, making it 2x faster to install than other leading connection systems. The metal prongs pierce the jacket of the cable and create an indestructible seal using dielectric grease, shielding it from moisture and other elements. The Cobra Connector is designed with an indicator light to improve troubleshooting throughout your lighting system. The indicator light will shine green once your connection is sealed and secured, making it faster to find the solution when troubleshooting.

DOOR

Place your 12/2 cable in the COBRA and close the door to hold the cable in place.

FANGS

Constructed from robust electro-plated copper prongs, the Fangs puncture the cable jacket and dispense dielectric grease around the puncture holes, ensuring a completely sealed connection.

CONNECTOR LEAD

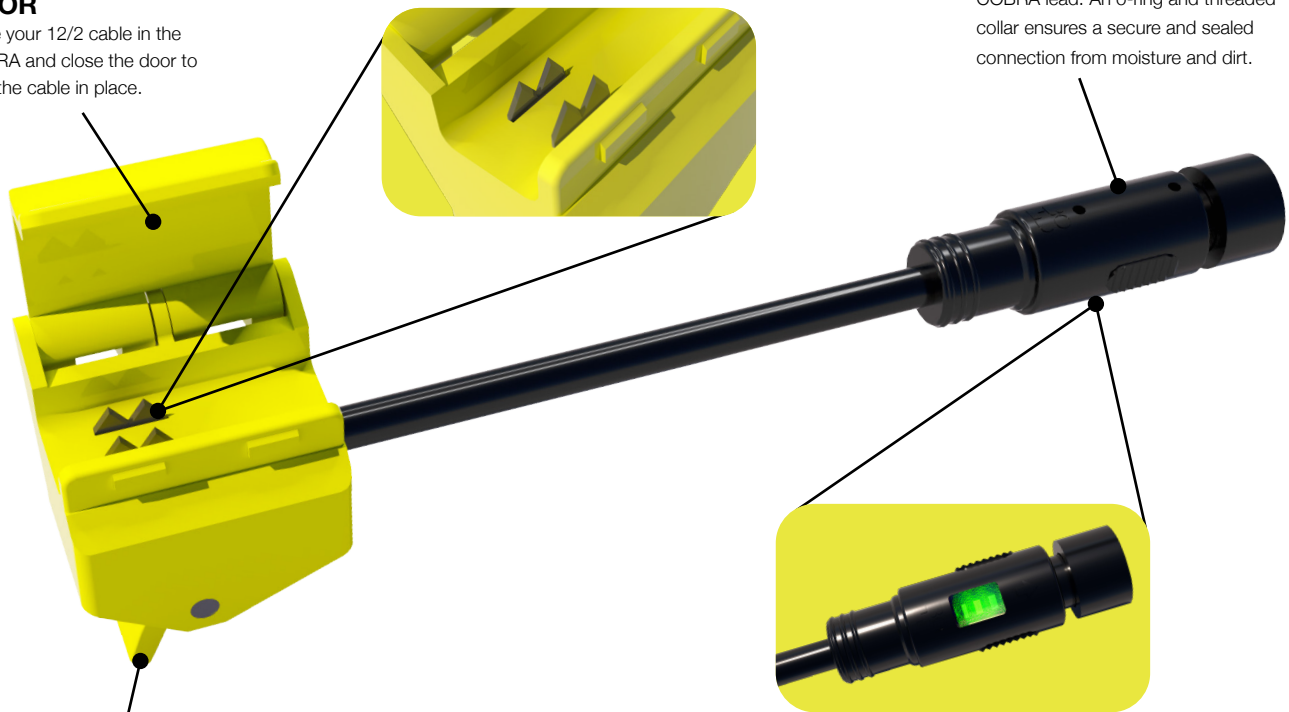
Located on the end of the COBRA, connect to the lead of the fixture to the COBRA lead. An o-ring and threaded collar ensures a secure and sealed connection from moisture and dirt.

LEVER

Located at the base of the COBRA, simply close the lever to activate the Fangs, piercing the cable and allowing the release of dielectric grease for a reliable and fully sealed connection.

INDICATOR LIGHT

Located on the bottom of the COBRA Connector Lead. Once you connect your fixture to the COBRA, check to make sure the indicator light on the connector lead is green, indicating a secure connection.



We do way more than just look good.

The best customer service in the industry.

Our culture, business priorities, and products reflect our bold approach. Just as important as the products are the people who build them. Our kick-a** team is fueled by passion, curiosity, and innovation. Our dedication, expertise, and purpose drive us to deliver nothing but the best outdoor lighting solutions to our customers.

Designed and developed in North America.

At BOLD, our purpose is to elevate outdoor spaces through modern innovative lighting solutions. Purpose-built alongside BOLD professionals, our cutting-edge portfolio of products has been designed to meet the needs of the North American market and climate. This purpose has guided us as we have evolved from a lighting distributor to a bold leader that is re-defining how to light the outdoors.

Highest quality light output & materials in the industry.

BOLD products are cutting-edge and made of anodized aluminum to withstand the unpredictable harshness of our climate. All our fixtures have virtually the highest light output in the industry (CRI 90+). No fine print. No exceptions. We are committed to pouring thoughtful intention into each product we add to our portfolio. Quality, luxury and excellence are not just our aspirations but our commitments to you.

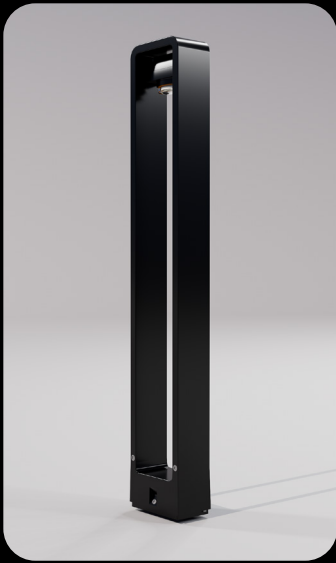
Success lies in collaboration.

We genuinely care about our BOLD professionals and prioritize addressing your pain points. We continuously improve and evolve our business to stay ahead of the industry. Our commitment to understanding and inspiring professionals to color outside the lines is a big part of what sets us apart and makes us bold- ensuring we deliver lighting solutions that are both inspiring and optimized for the performance, efficiency, and durability that you pursue.



PATH LIGHTING

Effective path lighting is essential for any outdoor space, as it not only adds beauty and functionality but also enhances safety. By illuminating paths, it ensures the safety of guests, highlights variations in elevation, showcases the vibrant and captivating elements of surrounding plants, and offers yet another opportunity to bring depth and dimension to the design of the space when the sun sets.



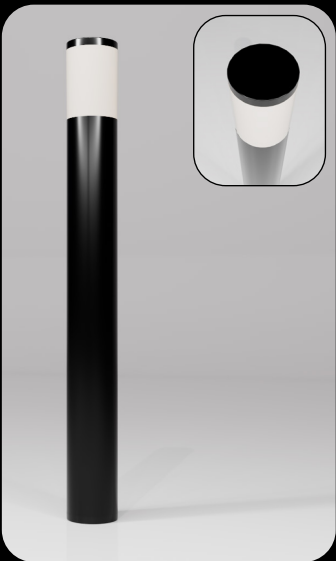
DAX HIGH

SKU: PL-DAX-H-BK
 Voltage: 10 - 15V AC
 Wattage: 3
 Volt Amps: 4.5
 Lumens: 160
 Color Temp: 2700K
 IP Rating: 65
 CRI: 92.5



DAX LOW

SKU: PL-DAX-L-BK
 Voltage: 10 - 15V AC
 Wattage: 3
 Volt Amps: 4.5
 Lumens: 160
 Color Temp: 2700K
 IP Rating: 65
 CRI: 92.5



SILO HIGH

SKU: PL-SILO-H-BK
 Voltage: 10 - 15V AC
 Wattage: 1.5
 Volt Amps: 2.5
 Lumens: 60
 Color Temp: 2700K
 IP Rating: 65
 CRI: 93



SILO LOW

SKU: PL-SILO-L-BK
 Voltage: 10 - 15V AC
 Wattage: 1.5
 Volt Amps: 2.5
 Lumens: 60
 Color Temp: 2700K
 IP Rating: 65
 CRI: 93



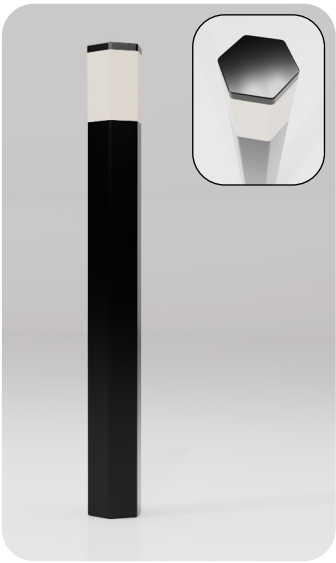
SILVA HIGH

SKU: PL-SILVA-H-BK
 Voltage: 10 - 15V AC
 Wattage: 1.5
 Volt Amps: 2.5
 Lumens: 60
 Color Temp: 2700K
 IP Rating: 65
 CRI: 92.5



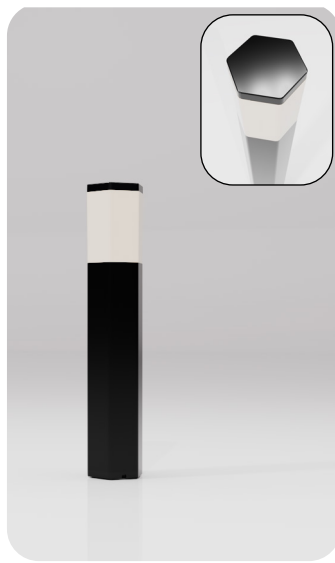
SILVA LOW

SKU: PL-SILVA-L-BK
 Voltage: 10 - 15V AC
 Wattage: 1.5
 Volt Amps: 2.5
 Lumens: 60
 Color Temp: 2700K
 IP Rating: 65
 CRI: 92.5



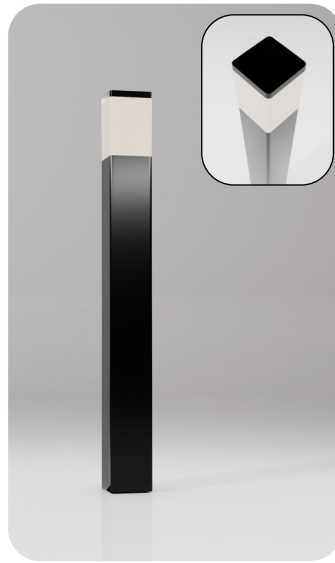
PRISM HIGH

SKU: PL-PRISM-H-BK
Voltage: 10 - 15V AC
Wattage: 1.5
Volt Amps: 2.5
Lumens: 60
Color Temp: 2700K
IP Rating: 65
CRI: 92.5



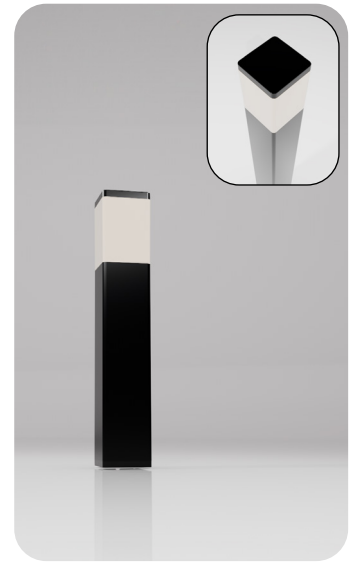
PRISM LOW

SKU: PL-PRISM-L-BK
Voltage: 10 - 15V AC
Wattage: 1.5
Volt Amps: 2.5
Lumens: 50
Color Temp: 2700K
IP Rating: 65
CRI: 92.5



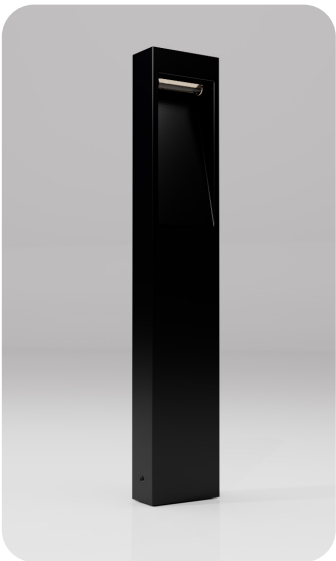
CUBE HIGH

SKU: PL-CUBE-H-BK
Voltage: 10 - 15V AC
Wattage: 1.5
Volt Amps: 2.5
Lumens: 60
Color Temp: 2700K
IP Rating: 65
CRI: 93



CUBE LOW

SKU: PL-CUBE-L-BK
Voltage: 10 - 15V AC
Wattage: 1.5
Volt Amps: 2.5
Lumens: 60
Color Temp: 2700K
IP Rating: 65
CRI: 93



TEAR HIGH

SKU: PL-TEAR-H-BK
Voltage: 10 - 15V AC
Wattage: 1.5
Volt Amps: 2.5
Lumens: 50
Color Temp: 2700K
IP Rating: 65
CRI: 92.5



TEAR LOW

SKU: PL-TEAR-L-BK
Voltage: 10 - 15V AC
Wattage: 1.5
Volt Amps: 2.5
Lumens: 50
Color Temp: 2700K
IP Rating: 65
CRI: 92.5



BLAZE HIGH

SKU: PL-BLAZE-H-BK
Voltage: 10 - 15V AC
Wattage: 1.5
Volt Amps: 2.5
Lumens: 60
Color Temp: 2700K
IP Rating: 65
CRI: 92.5

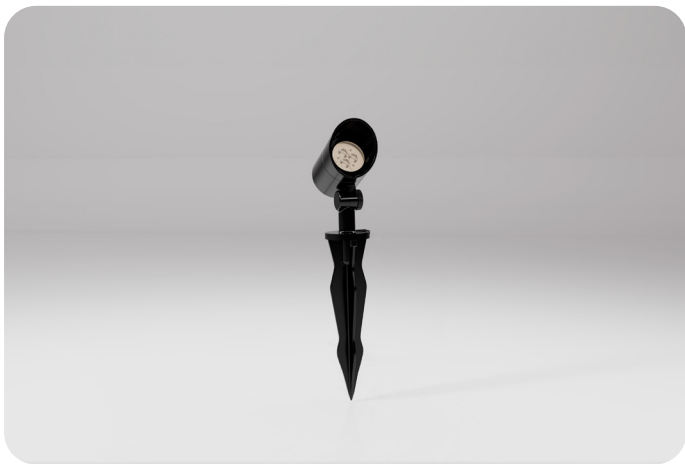


BLAZE LOW

SKU: PL-BLAZE-L-BK
Voltage: 10 - 15V AC
Wattage: 1.5
Volt Amps: 2.5
Lumens: 60
Color Temp: 2700K
IP Rating: 65
CRI: 92.5

SPOT LIGHTING

Discover the endless possibilities of BOLD's spotlight collection as you explore the various types of fixtures designed to enhance an outdoor space. With the versatility of spotlighting, you can illuminate a tall tree or beautiful bushes, showcase elegant statues, illuminate flowing grasses, or up light privacy walls. BOLD spotlights are a must-have and make it easy to create layers and depth within an outdoor space.



STRATA S

SKU: SL-STRATA-S-BK
Voltage: 10 - 15V AC
Wattage: 1.5
Volt Amps: 2.5
Lumens: 100
Color Temp: 2700K
IP Rating: 67
CRI: 93.5



STRATA M

SKU: SL-STRATA-M-BK
Voltage: 10 - 15V AC
Wattage: 4
Volt Amps: 6.5
Lumens: 320
Color Temp: 2700K
IP Rating: 67
CRI: 92.5



STRATA L

SKU: SL-STRATA-L-BK
Voltage: 10 - 15V AC
Wattage: 7
Volt Amps: 11
Lumens: 600
Color Temp: 2700K
IP Rating: 67
CRI: 92.5



STRATA L SLIM

SKU: SL-STRATA-SLIM-BK
Voltage: 10 - 15V AC
Wattage: 7
Volt Amps: 11
Lumens: 600
Color Temp: 2700K
IP Rating: 67
CRI: 92.5



BE PART OF SOMETHING BOLD.

The **best outdoor lighting solution** for North American professionals.

We genuinely care about our BOLD professionals and prioritize addressing their pain points, desires, and needs. By offering unwavering support, collaboration, and the best products, we continuously improve and evolve our business to stay ahead of the industry so you can do the same. Designed in North America, our products are cutting-edge, high-quality, and solve common problems that industry professionals face every day.

Our commitment to understanding, satisfying, educating, and inspiring professionals to color outside the lines and create masterpieces is what sets us apart and ensures we deliver a lighting system that is truly optimized for performance, efficiency, and durability.

Visit boldpros.com to join the community.

Built for you.

High-quality and versatile products designed and developed in North America, for North America.

We've got your back.

The BOLD team will support you every step of the way and ensure your business is set up for success.

Never stop learning.

Unlock growth for your business with training focused on leveraging the power of outdoor lighting.

Visit boldpros.com to join the community.



RECESSED LIGHTING

Recessed lighting is an excellent choice for creating versatile and ambient spaces at night. The sleek functionality of BOLD's recessed fixtures cause no problems to the everyday tasks of mowing the lawn, shoveling snow, or even driving over them with a car if used in a driveway application. By utilizing recessed lighting, you can effectively highlight variations in elevation, structures, and walls, as well as draw attention to focal points in an outdoor space.

ALL RECESSED FIXTURES COME IN BLACK AND STAINLESS STEEL FINISHES: BK SS



STARKE

SKU: RL-STARKE-W-BK
Voltage: 10 - 15V AC
Wattage: 3
Volt Amps: 4.5
Lumens: 240
Color Temp: 2700K
IP Rating: 67
CRI: 92.5



ONYX

SKU: RL-ONYX-60-SS
SKU: RL-ONYX-60-BK
Voltage: 10 - 15V AC
Wattage: 3
Volt Amps: 4.5
Lumens: 200
Color Temp: 2700K
IP Rating: 67
CRI: 92.5



ONYX HEX

SKU: RL-ONYX-HX-60-SS
SKU: RL-ONYX-HX-60-BK
Voltage: 10 - 15V AC
Wattage: 3
Volt Amps: 4.5
Lumens: 200
Color Temp: 2700K
IP Rating: 67
CRI: 92.5



ONYX SQUARE

SKU: RL-ONYX-SQ-60-SS
SKU: RL-ONYX-SQ-60-BK
Voltage: 10 - 15V AC
Wattage: 3
Volt Amps: 4.5
Lumens: 200
Color Temp: 2700K
IP Rating: 67
CRI: 92.5



RAY

SKU: RL-RAY-60-SS
SKU: RL-RAY-60-BK
Voltage: 10 - 15V AC
Wattage: 1.5
Volt Amps: 2.5
Lumens: 100
Color Temp: 2700K
IP Rating: 67
CRI: 93



RAY SQUARE

SKU: RL-RAY-SQ-60-SS
SKU: RL-RAY-SQ-60-BK
Voltage: 10 - 15V AC
Wattage: 1.5
Volt Amps: 2.5
Lumens: 100
Color Temp: 2700K
IP Rating: 67
CRI: 93



RAY HEX

SKU: RL-RAY-HX-60-SS
SKU: RL-RAY-HX-60-BK
Voltage: 10 - 15V AC
Wattage: 1.5
Volt Amps: 2.5
Lumens: 100
Color Temp: 2700K
IP Rating: 67
CRI: 93



SILO

SKU: RL-SILO-60-BK
Voltage: 10 - 15V AC
Wattage: 1.5
Volt Amps: 2.5
Lumens: 11
Color Temp: 2700K
IP Rating: 67
CRI: 93



SILO MINI

SKU: RL-SILO-22-BK
Voltage: 10 - 15V AC
Wattage: 0.5
Volt Amps: 0.8
Lumens: 3
Color Temp: 2700K
IP Rating: 67
CRI: 93



CUBE

SKU: RL-CUBE-60-BK
Voltage: 10 - 15V AC
Wattage: 1.5
Volt Amps: 2.5
Lumens: 11
Color Temp: 2700K
IP Rating: 67
CRI: 93



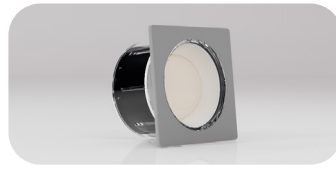
CUBE MINI

SKU: RL-CUBE-22-BK
Voltage: 10 - 15V AC
Wattage: 0.5
Volt Amps: 0.8
Lumens: 3
Color Temp: 2700K
IP Rating: 67
CRI: 93



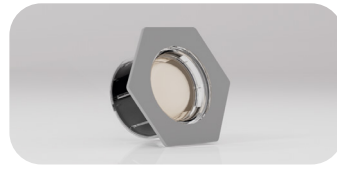
RUBY

SKU: RL-RUBY-60-SS
SKU: RL-RUBY-60-BK
Voltage: 10 - 15V AC
Wattage: 0.4
Volt Amps: 0.7
Lumens: 16
Color Temp: 2700K
IP Rating: 67
CRI: 93



RUBY SQUARE

SKU: RL-RUBY-SQ-60-SS
SKU: RL-RUBY-SQ-60-BK
Voltage: 10 - 15V AC
Wattage: 0.4
Volt Amps: 0.7
Lumens: 16
Color Temp: 2700K
IP Rating: 67
CRI: 93



RUBY HEX

SKU: RL-RUBY-HX-60-SS
SKU: RL-RUBY-HX-60-BK
Voltage: 10 - 15V AC
Wattage: 0.4
Volt Amps: 0.7
Lumens: 16
Color Temp: 2700K
IP Rating: 67
CRI: 93



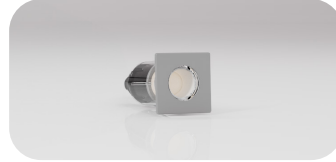
PRISM

SKU: RL-PRISM-60-BK
Voltage: 10 - 15V AC
Wattage: 1.5
Volt Amps: 2.5
Lumens: 11
Color Temp: 2700K
IP Rating: 67
CRI: 93



RUBY MINI

SKU: RL-RUBY-22-SS
SKU: RL-RUBY-22-BK
SKU: RL-RUBY-22-NR
Voltage: 10 - 15V AC
Wattage: 0.1
Volt Amps: 0.15
Lumens: 1
Color Temp: 2700K
IP Rating: 67
CRI: 93



RUBY MINI SQUARE

SKU: RL-RUBY-SQ-22-SS
SKU: RL-RUBY-SQ-22-BK
Voltage: 10 - 15V AC
Wattage: 0.1
Volt Amps: 0.15
Lumens: 1
Color Temp: 2700K
IP Rating: 67
CRI: 93



RUBY MINI HEX

SKU: RL-RUBY-HX-22-BK
Voltage: 10 - 15V AC
Wattage: 0.1
Volt Amps: 0.15
Lumens: 1
Color Temp: 2700K
IP Rating: 67
CRI: 93



PRISM MINI

SKU: RL-PRISM-22-BK
Voltage: 10 - 15V AC
Wattage: 0.5
Volt Amps: 0.8
Lumens: 3
Color Temp: 2700K
IP Rating: 67
CRI: 93



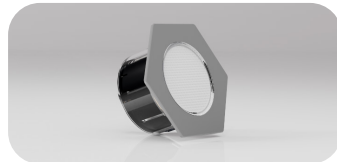
DIAMOND

SKU: RL-DIAMOND-60-SS
SKU: RL-DIAMOND-60-BK
Voltage: 10 - 15V AC
Wattage: 0.4
Volt Amps: 0.7
Lumens: 16
Color Temp: 2700K
IP Rating: 67
CRI: 93



DIAMOND SQUARE

SKU: RL-DIAMOND-SQ-60-SS
SKU: RL-DIAMOND-SQ-60-BK
Voltage: 10 - 15V AC
Wattage: 0.4
Volt Amps: 0.7
Lumens: 16
Color Temp: 2700K
IP Rating: 67
CRI: 93



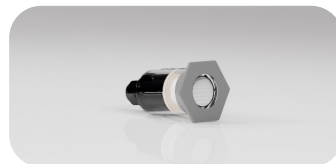
DIAMOND HEX

SKU: RL-DIAMOND-HX-60-SS
SKU: RL-DIAMOND-HX-60-BK
Voltage: 10 - 15V AC
Wattage: 0.4
Volt Amps: 0.7
Lumens: 16
Color Temp: 2700K
IP Rating: 67
CRI: 93



DIAMOND MINI

SKU: RL-DIAMOND-22-SS
SKU: RL-DIAMOND-22-BK
SKU: RL-DIAMOND-22-NR
Voltage: 10 - 15V AC
Wattage: 0.1
Volt Amps: 0.15
Lumens: 2
Color Temp: 2700K
IP Rating: 67
CRI: 93



DIAMOND MINI HEX

SKU: RL-DIAMOND-HX-22-SS
SKU: RL-DIAMOND-HX-22-BK
Voltage: 10 - 15V AC
Wattage: 0.1
Volt Amps: 0.15
Lumens: 2
Color Temp: 2700K
IP Rating: 67
CRI: 93



DIAMOND MINI SQUARE

SKU: RL-DIAMOND-SQ-22-SS
SKU: RL-DIAMOND-SQ-22-BK
Voltage: 10 - 15V AC
Wattage: 0.1
Volt Amps: 0.15
Lumens: 2
Color Temp: 2700K
IP Rating: 67
CRI: 93

UNDERCAP LIGHTING

Enhance an outdoor living area with undercap lighting, designed to provide subtle illumination that brings depth and dimension to even the smallest spaces. With undercap lighting, illuminate walls, pillars, benches, and fire areas.



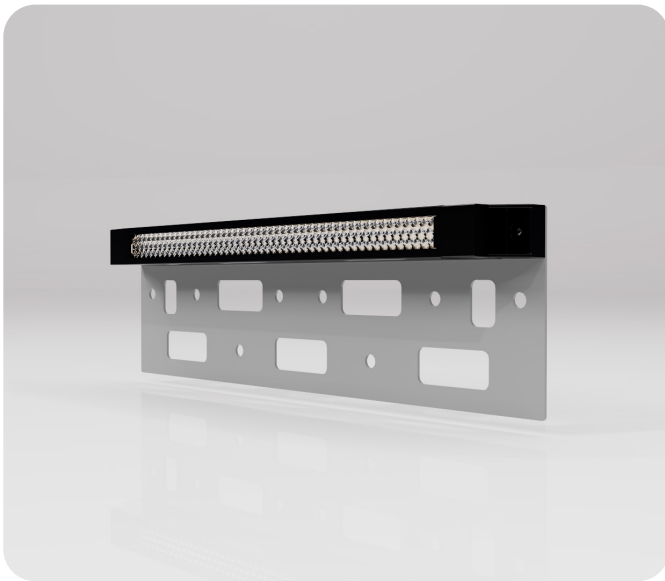
EDGE 7 NEAT

SKU: UL-EDGE-NEAT-7-BK
Voltage: 10 - 15V AC
Wattage: 0.5
Volt Amps: 0.8
Lumens: 25
Color Temp: 2700K
IP Rating: 65
CRI: 93



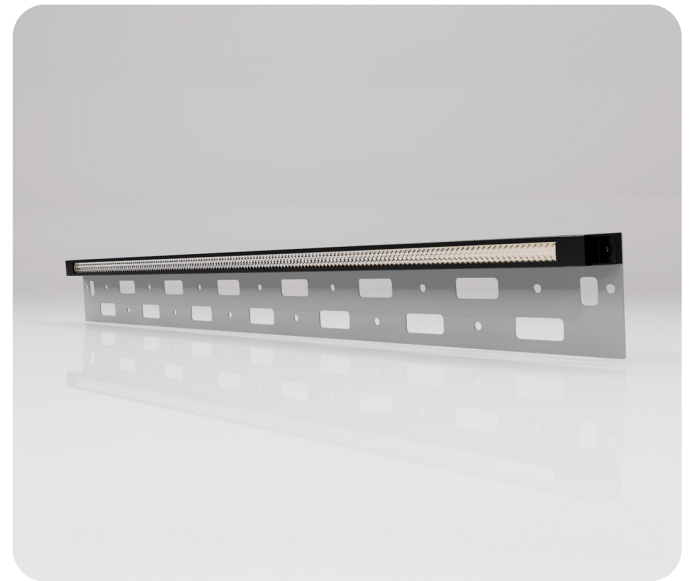
EDGE 21 NEAT

SKU: UL-EDGE-NEAT-21-BK
Voltage: 10 - 15V AC
Wattage: 2
Volt Amps: 3.2
Lumens: 90
Color Temp: 2700K
IP Rating: 65
CRI: 93



EDGE 7

SKU: UL-EDGE-7-BK
Voltage: 10 - 15V AC
Wattage: 0.5
Volt Amps: 0.8
Lumens: 25
Color Temp: 2700K
IP Rating: 65
CRI: 93

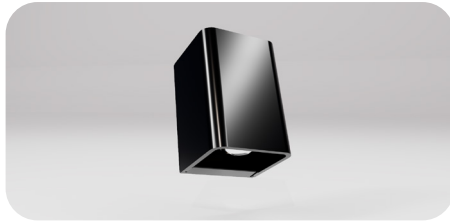


EDGE 21

SKU: UL-EDGE-21-BK
Voltage: 10 - 15V AC
Wattage: 2
Volt Amps: 3.2
Lumens: 90
Color Temp: 2700K
IP Rating: 65
CRI: 93

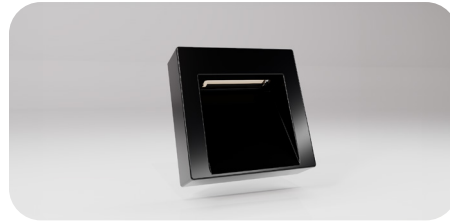
WALL LIGHTING

Wall lighting is a fantastic way to add captivating lighting effects to your outdoor area. By utilizing distinct light beams and layering fixtures, you can effortlessly create stunning and multi-dimensional outdoor lighting effects. Use wall lighting to illuminate a wall, brighten up an entrance, accentuate a fireplace, or highlight wall textures.



DAX UP DOWN

SKU: WL-DAX-UD-BK
Voltage: 10 - 15V AC
Wattage: 6
Volt Amps: 10.5
Lumens: 320
Color Temp: 2700K
IP Rating: 65
CRI: 92.5



WALL TEAR

SKU: WL-TEAR-BK
Voltage: 10 - 15V AC
Wattage: 1.5
Volt Amps: 2.5
Lumens: 50
Color Temp: 2700K
IP Rating: 65
CRI: 93



CUBE BACKLIT

SKU: WL-CUBE-BL-BK
Voltage: 10 - 15V AC
Wattage: 2
Volt Amps: 3
Lumens: 160
Color Temp: 2700K
IP Rating: 65
CRI: 93



PRISM BACKLIT

SKU: WL-PRISM-BL-BK
Voltage: 10 - 15V AC
Wattage: 2
Volt Amps: 3
Lumens: 160
Color Temp: 2700K
IP Rating: 65
CRI: 93



SILO BACKLIT

SKU: WL-SILO-BL-BK
Voltage: 10 - 15V AC
Wattage: 2
Volt Amps: 3
Lumens: 160
Color Temp: 2700K
IP Rating: 65
CRI: 93



HERO

SKU: WL-HERO-100-BK
Voltage: 10 - 15V AC
Wattage: 1
Volt Amps: 1.5
Lumens: 35
Color Temp: 2700K
IP Rating: 65
CRI: 94



HERO MINI

SKU: WL-HERO-60-BK
SKU: WL-HERO-60-WT
Voltage: 10 - 15V AC
Wattage: 0.5
Volt Amps: 0.6
Lumens: 24
Color Temp: 2700K
IP Rating: 65
CRI: 94



DOME

SKU: WL-DOME-100-BK
Voltage: 10 - 15V AC
Wattage: 1
Volt Amps: 1.5
Lumens: 55
Color Temp: 2700K
IP Rating: 65
CRI: 94



DOME MINI

SKU: WL-DOME-60-BK
SKU: WL-DOME-60-WT
Voltage: 10 - 15V AC
Wattage: 0.5
Volt Amps: 0.6
Lumens: 24
Color Temp: 2700K
IP Rating: 65
CRI: 94

ACCESSORIES

Maximize the potential of your outdoor lighting system and fixtures with a wide range of BOLD accessories. Customize and tailor your outdoor lighting experience to perfectly suit your space and the specific preferences for your customers. Explore the innovative methods to install and personalize a BOLD system, resulting in a one-of-a-kind and highly functional outdoor lighting solution.



COBRA DUO

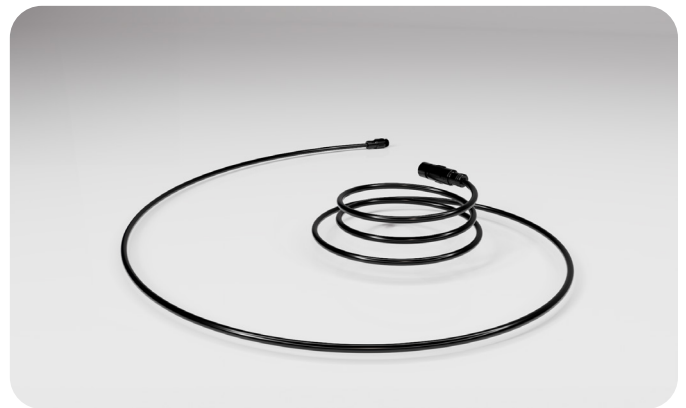
SKU: CC-02

A patent pending system that allows you to split your main cable line and extend your system's power reach.



EXTENSION 3FT

SKU: EXT-3FT



EXTENSION 6FT

SKU: EXT-6FT



EXTENSION 9FT

SKU: EXT-9FT

SYSTEM

BOLD transformers have been specifically designed to provide easy installation, consistent performance, and long-lasting durability. They are the perfect choice for any low-voltage outdoor lighting system. When combined with the dependable COBRA CONNECTOR and 12/2 cable, your system will deliver smooth, reliable, and optimized performance.



SMART SOURCE 60

SKU: SMT-TFMR-60
Wattage: 120Vac



SMART SOURCE 180

SKU: SMT-TFMR-180
Wattage: 120Vac



SMART SOURCE 300

SKU: SMT-TFMR-300
Wattage: 120Vac



SOURCE 60

SKU: TFMR-60
Wattage: 120Vac



SOURCE 180

SKU: TFMR-180
Wattage: 120Vac



Design a **Lighting Plan** in 3 Steps.

Who says you have to light up an entire outdoor space all at once? With the BOLD system, you can take it one step at a time. Whether it's because of the homeowners' preference, budget constraints, or any other factors, easily tap into the BOLD system and add lighting as you go. Start by laying enough cable in the space and then, with time, connect more fixtures. This way, you can illuminate specific areas of the outdoor space gradually, until you've created a dream outdoor living area, both day and night.



STEP ONE

Outdoor lighting is not only a practical solution to ensure the safety of an outdoor space at night but also a stylish way to enhance its overall appeal. By strategically placing illuminated fixtures along changes in elevation, pathways, and other high-traffic areas, you create a well-lit environment that feels secure and safe, even in the darkness.

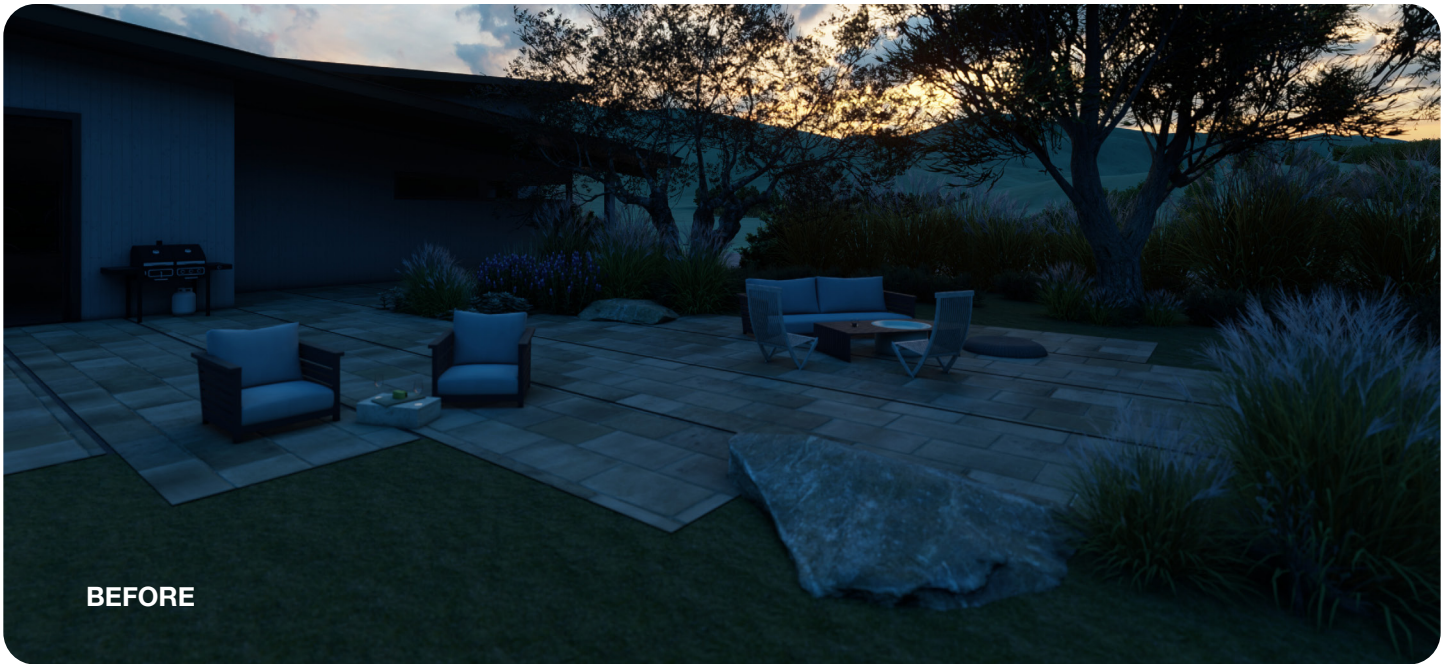
Consider starting with illuminating main pathways. By doing so, you not only provide a clear and visible route, but you also set the foundation for incorporating more lighting elements throughout.



STEP TWO

It's important to illuminate the most used areas in the outdoor space. Consider the spots where people naturally come together, socialize, and unwind after a long day. Whether it's a welcoming outdoor kitchen, a cozy seating spot, or a captivating fire area, these places have so much potential for both day and night use.

By making them more functional in the evening, you can create a truly magical atmosphere that will encourage gatherings and make an outdoor space even more enjoyable after the sun sets.



BEFORE



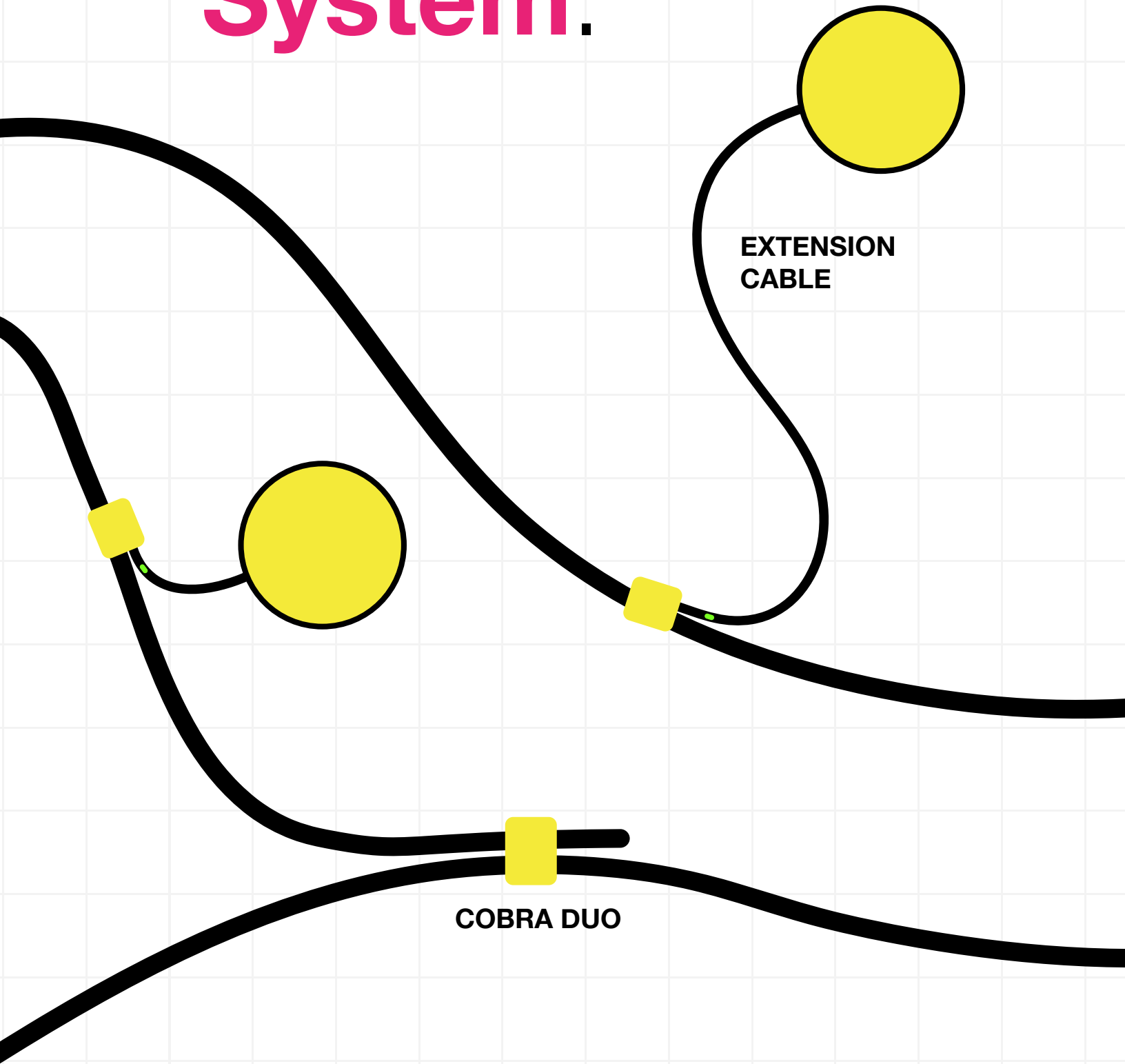
AFTER

STEP THREE

Enhance the beauty of an outdoor living space by incorporating layers and dimension into your lighting plan. Illuminate trees, gardens, privacy fences, and other design elements to bring the space to life and create a captivating experience at night. Adding layers and dimension creates a harmonious ambiance that brings everything together.

Now it's time to fully appreciate the stunning space you've created for your client. You've created an extension of their home that can be enjoyed both day and night! It's important to remember that as the landscape evolves, you may need to adjust the fixtures to ensure proper illumination of the space or object. As time goes on and the landscape grows, you have the flexibility to effortlessly incorporate additional lighting to accommodate for any shifts or growth. This allows you to seamlessly adapt to the natural changes that occur, while still preserving the original vision and feel of the space.

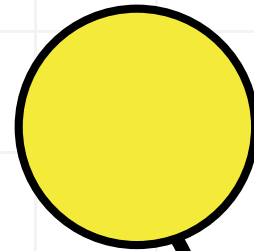
The Bold **System.**



SMART SOURCE

BOLD

LIGHT FIXTURE



**COBRA
CONNECTOR**



**SYSTEM-WIDE
APP CONTROL**

Coming soon!

**BOLD
APP**



**STAY
TUNED!**

More products are coming in hot in Q2:

Color changing, dimmable, strip light, and even more!

**BO
LD**

DESIGNED AND DEVELOPED IN NORTH AMERICA.



PRINTED IN CANADA

PRODUCT PHOTOS SHOWN ARE RENDERED VERSIONS. ACTUAL PRODUCTS MAY VARY.